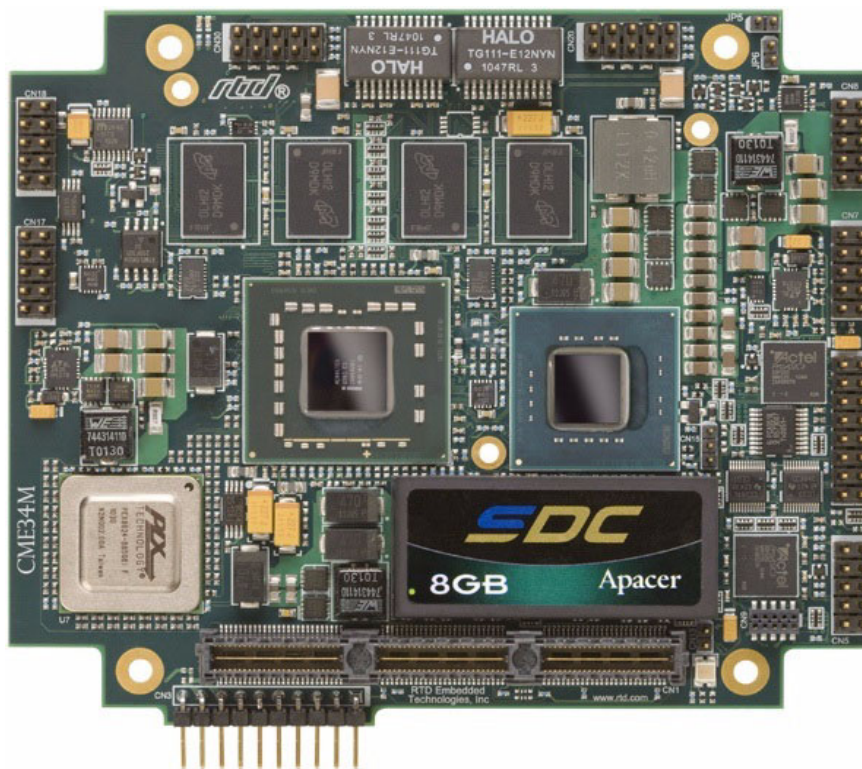


# CME34M cpuModules™



## User's Manual

BDM-610000076 Revision B



[www.rtd.com](http://www.rtd.com)

ISO9001 and AS9100 Certified

**rttd**®  
"Accessing the Analog World"

## CME34M cpuModules™ User's Manual

RTD Document Number: BDM-610000076 Revision B

Copyright © 2009-<Year RTD Embedded Technologies, Inc. All rights reserved.

### Trademarks

Advanced Analog I/O, Advanced Digital I/O, aAIO, aDIO, a2DIO, Autonomous SmartCal, "Catch the Express", cpuModule, dspFramework, dspModule, expressMate, ExpressPlatform, HiDANplus, "MIL Value for COTS prices", multiPort, PlatformBus, and PC/104EZ are trademarks, and "Accessing the Analog World", dataModule, IDAN, HiDAN, RTD, and the RTD logo are registered trademarks of RTD Embedded Technologies, Inc (formerly Real Time Devices, Inc.). PS/2 is a trademark of International Business Machines Inc. PCI, PCI Express, and PCIe are trademarks of PCI-SIG. PC/104, PC/104-Plus, PCI-104, PCIe/104, PCI/104-Express and 104 are trademarks of the PC/104 Embedded Consortium. All other trademarks appearing in this document are the property of their respective owners.

Failure to follow the instructions found in this manual may result in damage to the product described in this manual, or other components of the system. The procedure set forth in this manual shall only be performed by persons qualified to service electronic equipment. Contents and specifications within this manual are given without warranty, and are subject to change without notice. RTD Embedded Technologies, Inc. shall not be liable for errors or omissions in this manual, or for any loss, damage, or injury in connection with the use of this manual.

### Revision History

Revision	Date	Reason for Change
A	2/17/2012	Initial release
B	5/18/15	Split the last row in the Dual Serial port mode tables into two rows and added the Dual Serial Port pin out tables to the IDAN Pinout section.

# CME34M cpuModules™





# Table of Contents

## Chapter 1 Introduction

<b>CME34M cpuModules</b> .....	2
Enhanced Intel SpeedStep (Core 2 Duo only) .....	3
Thermal Monitor .....	3
aDIO with Wake-on-aDIO .....	3
<b>Ordering Information</b> .....	4
CME34M Model Options .....	4
Cable Kits and Accessories .....	4
<b>Board Features</b> .....	5
I/O .....	6
BIOS .....	7
Block Diagram .....	8
<b>Specifications</b> .....	9
Physical Characteristics .....	9
Power Consumption .....	9
Operating Conditions .....	9
Electrical Characteristics .....	10
<b>Contact Information</b> .....	12

## Chapter 2 Getting Started

<b>Connector Locations</b> .....	14
<b>Selecting the Stack Order for the CME34M</b> .....	16
<b>Stack Example</b> .....	17
<b>Connecting to the Stack</b> .....	18
<b>Connecting the Utility Cable</b> .....	19
<b>Connecting a Keyboard</b> .....	19
<b>Booting the CME34M cpuModule for the First Time</b> .....	19

## Chapter 3 Connecting the cpuModule

<b>Proper Grounding Techniques</b> .....	22
<b>Connector Locations</b> .....	22
<b>Auxiliary Power (CN3)</b> .....	24
<b>Utility Port Connector (CN5)</b> .....	25
Speaker .....	25
Keyboard .....	26
Mouse .....	26
System Reset .....	26
Soft Power Button .....	26
Battery .....	27
<b>SVGA Video Connector (CN18)</b> .....	28

<b>SATA Disk Chip Socket (U6)</b> .....	29
Installing and Configuring the SATA Disk Chip .....	29
<b>Serial Port 1 (CN7) and Serial Port 2 (CN8)</b> .....	30
Serial Port UART .....	30
RS-232 Serial Port (Default) .....	30
RS-422 or RS-485 Serial Port .....	31
RS-422 and RS-485 Mode Pinout .....	32
Dual Serial Port Modes .....	33
<b>Advanced Digital I/O (aDIO™) Port (CN6)</b> .....	35
<b>USB 2.0 Connector (CN17)</b> .....	36
<b>Ethernet (10/100/1000Base-T and -TX) Connectors (CN20 and CN30)</b> .....	37
<b>PCIe/104 Type 2 Bus (CN1 - Top and CN2 - Bottom)</b> .....	38
PCIe/104 Type 2 Compatibility .....	40
PCIe Link Configuration .....	41
PCIe Peer-To-Peer .....	41
<b>Optional RTC Battery Input (CN13)</b> .....	42
<b>Fan Power, Switched (CN15)</b> .....	42

## Chapter 4      Using the cpuModule

<b>The RTD Enhanced AMI BIOS</b> .....	44
Configuring the RTD Enhanced AMI BIOS .....	44
Entering the BIOS Setup .....	44
Field Selection .....	44
Main Menu Setup Fields .....	45
<b>Memory Map</b> .....	46
<b>I/O Address Map</b> .....	47
<b>Hardware Interrupts</b> .....	48
<b>Non-Standard Serial Port Modes</b> .....	49
<b>Advanced Digital I/O Ports (aDIO™)</b> .....	50
Digital I/O Register Set .....	50
Port 1 Data register is a read/write byte direction .....	52
Interrupts .....	52
Advanced Digital Interrupts .....	52
Event Mode .....	52
Match Mode .....	52
Strobe Mode .....	53
Wake-on-aDIO .....	53
<b>Real Time Clock Control</b> .....	54
Overview .....	54
Accessing the RTC Registers .....	54
<b>Watchdog Timer Control</b> .....	56
<b>Thermal Management</b> .....	57
Thermal Monitor .....	57
Fan Mode .....	57

Further Temperature Reduction .....	57
<b>Power Management</b> .....	58
Enabling Enhanced Intel SpeedStep Technology (Core 2 Duo) .....	58
Advanced Configuration and Power Interface (ACPI) .....	58
Power Button Modes .....	58
Low-Power Wake Options .....	58
AT vs. ATX Power Supplies .....	59
ATX Power Supply Signals .....	59
Reducing Power Consumption .....	59
<b>Multi-Color LED</b> .....	60
<b>Reset Status Register</b> .....	61
<b>Features and Settings That Can Affect Boot Time</b> .....	63
Quick Boot .....	63
Add-On Cards With BIOS Extensions .....	63
VGA Controller .....	63
Hard Drive Type .....	63
Monitor Type .....	63
NVRAM Updates .....	63
Boot Device Order .....	63
<b>System Recovery</b> .....	64
Reset Button Recovery .....	64
Load Default BIOS Settings .....	64
Serial Power On Self Test POST Code Output .....	64
BIOS Boot Block Recovery .....	64
 <b>Appendix A Hardware Reference</b>	
<b>Jumper Settings and Locations</b> .....	66
<b>Onboard PCI/PCIe Devices</b> .....	67
<b>Physical Dimensions</b> .....	68
Board Spacing .....	69
 <b>Appendix B Troubleshooting</b>	
<b>Common Problems and Solutions</b> .....	72
<b>Troubleshooting a PC/104 System</b> .....	73
<b>How to Obtain Technical Support</b> .....	74
 <b>Appendix C IDAN™ Dimensions and Pinout</b>	
<b>IDAN Dimensions and Connectors</b> .....	76
<b>External I/O Connections</b> .....	77
 <b>Appendix D Additional Information</b>	
<b>Application Notes</b> .....	85
<b>Drivers and Example Programs</b> .....	85

<b>Interrupt Programming .....</b>	<b>85</b>
<b>Serial Port Programming .....</b>	<b>85</b>
<b>PC/104 Specifications .....</b>	<b>85</b>

## **Appendix E    Limited Warranty**



# Chapter 1 Introduction

This manual provides comprehensive hardware and software information for users developing with the CME34M PCIe/104 cpuModule.



**Note** Read the specifications beginning on page 9 prior to designing with the cpuModule.

This manual is organized as follows:

<b>Chapter 1</b>	<b><i>Introduction</i></b> introduces main features and specifications
<b>Chapter 2</b>	<b><i>Getting Started</i></b> provides abbreviated instructions to get started quickly
<b>Chapter 3</b>	<b><i>Connecting the cpuModule</i></b> provides information on connecting the cpuModule to peripherals
<b>Chapter 4</b>	<b><i>Using the cpuModule</i></b> provides information to develop applications for the cpuModule, including general cpuModule information, detailed information on storing both applications and system functions, and using utility programs
<b>Appendix A</b>	<b><i>Hardware Reference</i></b> lists jumper locations and settings, physical dimensions, and processor thermal management
<b>Appendix B</b>	<b><i>Troubleshooting</i></b> offers advice on debugging problems with your system
<b>Appendix C</b>	<b><i>IDAN™ Dimensions and Pinout</i></b> provides connector pinouts for the cpuModule installed in an RTD Intelligent Data Acquisition Node (IDAN) frame
<b>Appendix D</b>	<b><i>Additional Information</i></b> lists sources and websites to support the cpuModule installation and configuration
<b>Appendix E</b>	<b><i>Limited Warranty</i></b>

## CME34M cpuModules

RTD's CME34M cpuModule represents the latest in high-performance, energy-efficient embedded computing solutions. Based on the Intel® "Montevina" platform, it features a 64-bit "Penryn" processor coupled with a GS45 chipset. It includes a source-synchronous Front-Side-Bus (FSB) operating up to 1066 MHz, and up to 6 MB of L2 cache. This cpuModule is available either with a dual-core Core 2 Duo processor, or a single core Celeron-M processor. The Core 2 Duo processor features Enhanced Intel SpeedStep® technology, which enables real-time dynamic switching between multiple voltage and frequency points. This results in optimal performance without compromising low power.

A dual channel DDR2 memory interface operating at up to 800 MHz ensures adequate memory bandwidth to keep up with both processors. All memory chips are soldered directly onto the board.

The video interface is provided by an Analog SVGA output. The two outputs are independent, and can display separate images and display timings. Maximum resolution is 2048 x 1536.

High-speed peripheral connections include USB 2.0, with up to 480 Mb/sec data throughput. A Serial-ATA (SATA) controller provides a fast 3.0 Gbps connection to the hard drives. Network connectivity is provided by an integrated 10/100/1000 Mbps Ethernet controller. Other features include two RS-232/422/485 COM ports and Advanced Digital I/O (aDIO).

RTD has gone the extra mile to include additional advanced features for maximum flexibility. These include a SATA Disk Chip socket that allows flash drive with a standard SATA interface to be attached to the board, either socketed or soldered. An Advanced Watchdog Timer is provided that can generate an interrupt or reset when the timer expires. SDRAM is soldered directly to the board for high vibration resistance. The CME34M is also available in a rugged, fanless IDAN enclosure.

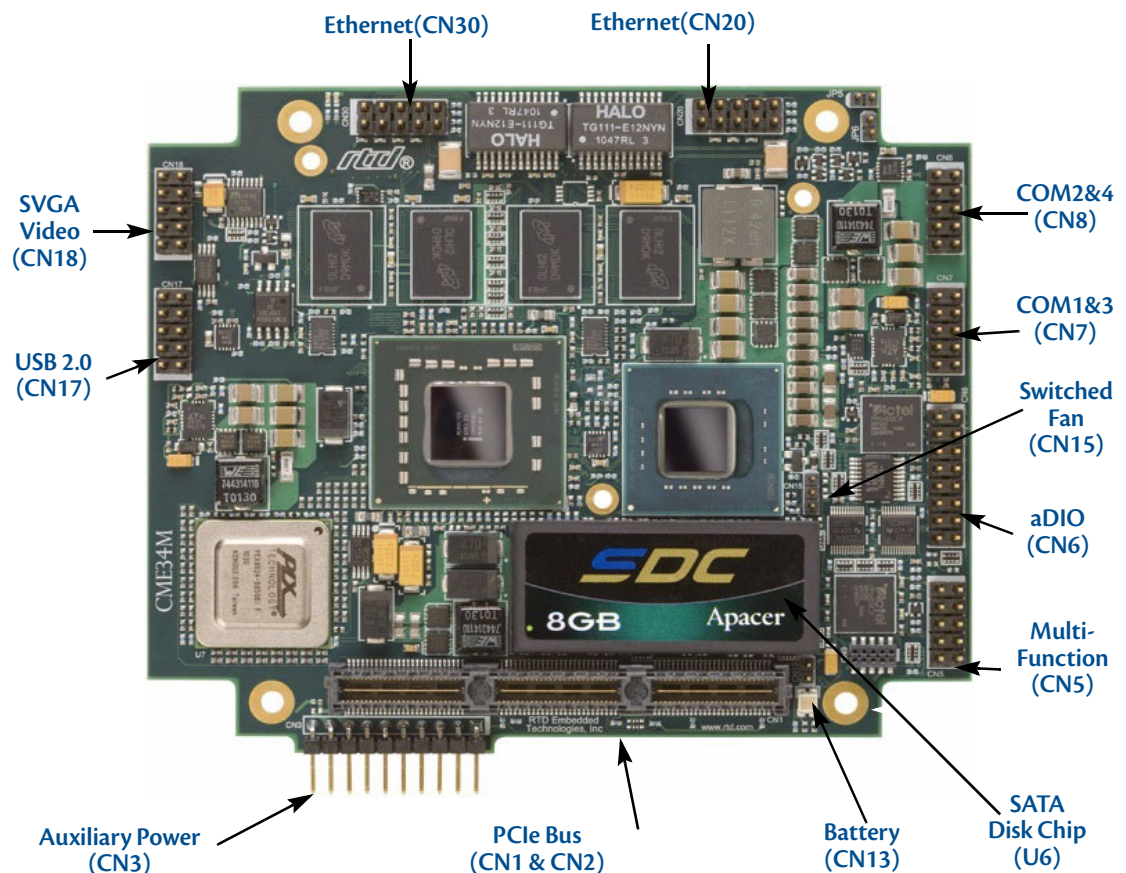


Figure 1 CME34M cpuModule (top view)

## Enhanced Intel SpeedStep (Core 2 Duo only)

Enhanced Intel® SpeedStep® Technology has revolutionized thermal and power management by giving operating systems greater control over the processor's operating frequency and input voltage. Systems can easily manage power consumption dynamically. Today's embedded systems are demanding greater performance at equivalent levels of power consumption. Legacy hardware support for backplanes, board sizes and thermal solutions have forced design teams to place greater emphasis on power and thermal budgets. Intel has extended architectural innovation for saving power by implementing new features such as Enhanced Intel SpeedStep Technology. Enhanced Intel SpeedStep Technology allows the processor performance and power consumption levels to be modified while a system is functioning. This is accomplished via operating system or application software, which changes the processor speed and the processor core voltage while the system is operating. A variety of inputs such as system power source, processor thermal state, or operating system policy are used to determine the proper operating state.

The software model behind Enhanced Intel SpeedStep Technology has ultimate control over the frequency and voltage transitions. This software model is a major step forward over previous implementations of Intel SpeedStep technology. Legacy versions of Intel SpeedStep technology required hardware support through the chipset. Enhanced Intel SpeedStep Technology has removed the chipset hardware requirement and only requires the support of the voltage regulator, processor and operating system. Centralization of the control mechanism and software interface to the processor, and reduced hardware overhead has reduced processor core unavailability time to 10  $\mu$ s from the previous generation unavailability of 250  $\mu$ s.

## Thermal Monitor

The Intel® Thermal Monitor is a feature on the CME34M that automatically throttles the CPU when the CPU exceeds its thermal limit. This allows the processor to operate for short durations at a higher frequency than the thermal solution or ambient temperature would otherwise allow. The thermal limit and duty cycle of the Thermal Monitor cannot be modified.

A second thermal monitor is used to throttle the memory interface when the memory controller or the memory approaches its thermal limit. This ensures proper operation even under the harshest conditions. The thermal monitors operate independently of each other.

## aDIO with Wake-on-aDIO

RTD's exclusive aDIO™ is 12 digital bits configured as 8 bit-direction programmable and 4-bit port-direction programmable I/O, plus 2 strobe inputs giving you any combination of inputs and outputs. Match, event, and strobe interrupt modes mean no more wasting valuable processor time polling digital inputs. Interrupts are generated when the 8 bit-direction programmable digital inputs match a pattern or on any value change event. Bit masking allows selecting any subgroup of eight bits. The strobe input latches data into the bit-programmable port and generates an interrupt. Any of the interrupt modes can be used to generate a wake event from any standby/powerdown mode.

## Ordering Information

The CME34M cpuModule is available with a selection of processors and memory sizes. The cpuModule can also be purchased as part of an Intelligent Data Acquisition Node (IDAN™) building block, which consists of the cpuModule and a milled aluminum IDAN frame. The IDAN building block can be used in just about any combination with other IDAN building blocks to create a simple but rugged PC/104 stack. Refer to Appendix C, *IDAN™ Dimensions and Pinout*, for more information. The CME34M cpuModule can also be purchased as part of a custom-built RTD HiDAN™ or HiDAN*plus* High Reliability Intelligent Data Acquisition Node. Contact RTD for more information on its high reliability PC-104 systems.

### CME34M Model Options

The basic cpuModule model options are shown below. Refer to the RTD website ([www.rtd.com](http://www.rtd.com)) for more detailed ordering information and any new variations that may be available.

**Table 1 CME34M cpuModule Model Options**

Part Number	Description
CME34MVD1860HR-2048	Core 2 Duo (Dual Core) 1.86 GHz, 2GB DDR2-SDRAM
CME34MVD1860HR-1024	Core 2 Duo (Dual Core) 1.86 GHz, 1GB DDR2-SDRAM
CME34MVD1200HR-2048	Core 2 Duo (Dual Core) 1.20 GHz, 2GB DDR2-SDRAM
CME34MVD1200HR-1024	Core 2 Duo (Dual Core) 1.20 GHz, 1GB DDR2-SDRAM
CME34MCS1200HR-2048	Celeron (Single Core) 1.20 GHz, 2GB DDR2-SDRAM
CME34MCS1200HR-1024	Celeron (Single Core) 1.20 GHz, 1GB DDR2-SDRAM

### Cable Kits and Accessories

For maximum flexibility, RTD does not provide cables with the cpuModule. You may wish to purchase the CME34M cpuModule cable kit (P/N XK-CM96), which contains:

- Multi-function utility harness (keyboard socket, battery, reset, speaker)
- Two serial port cables (DIL-10 to DSUB-9)
- VGA monitor cable (DIL-10 to high density 15-pin DSUB)
- aDIO cable (DIL-16 to DSUB-25)
- Two USB cables (5-pin SIL to USB A)
- PCIe/104 Type 2 break-out board (to connect SATA and USB)
- Two Ethernet cables (DIL-10 to RJ-45)

For additional accessories, refer to the RTD website.

## Board Features

- Penryn Processor

Part Number	Speed	Cores	L2 Cache	FSB Speed
CME34MVD1860	1.86GHz	Two	6 MB	1066 MHz
CME34MVD1200	1.20 GHz	Two	3 MB	800 MHz
CME34MCS1200	1.20 GHz	One	1 MB	800 MHz

- Intel 64 architecture for 64-bit processing.
  - Enhanced Intel SpeedStep Technology and dynamic FSB frequency switching (Core 2 Duo only).
  - Enhanced Intel Dynamic Acceleration Technology and Enhanced Multi-Threaded Thermal Management (Core 2 Duo only)
  - Supports enhanced Intel Virtualization Technology (Core 2 Duo only)
  - 45 nm process
- 1 GB or 2GBBytes BGA DDR2 SDRAM
  - Dual-channel memory interface
  - Up to 800MHz Data Rate per channel
  - Surface Mounted for maximum reliability
- Stackable 156-pin PCIe/104 Type 2 bus on top
  - Four PCI Express x1 Lanes
  - Two PCI Express x4 Lanes
  - Two SATA 2.0
  - Two USB 2.0
  - SMBus
- Stackable 156-pin PCIe/104 Type 2 bus on bottom
  - Four PCI Express x1 Lanes
  - Two PCI Express x4 Lanes
  - One SATA 2.0
  - Two USB 2.0
  - SMBus
- Advanced Thermal Management
  - Thermal Monitor throttles processor and memory to prevent thermal runaway
  - Auto Fan Control only runs fan when needed
  - SMBus Temperature Monitor for CPU and board temperature
  - Mini Fan Heatsink with Auto Fan control
  - Passive Structural Heatsink & Heatpipes in IDAN and HiDAN System Configurations
- Advanced Programmable Interrupt Controller (APIC)
  - 24 interrupt channels with APIC enabled (15 in legacy PIC mode)
  - High Precision Event Timer
- Advanced Configuration and Power Interface (ACPI)
  - ACPI 3.0 Compliant

- Supported power down modes: S1 (Power On Suspend), S3 (Suspend to RAM), S4 (Hibernate), and S5 (Soft-Off)
- CPU Clock Throttling and Clock Stop for C0 to C6 Support
- Wake events include:
  - aDIO Interrupt
  - Wake-on-LAN
  - Real Time Clock
  - COM port Ring
  - Power Switch
  - etc.
- Network Boot supported by Intel PXE
- Y2K compliant Real-Time Clock (external battery required)
- Nonvolatile storage of CMOS settings without battery
- Advanced Watchdog timer
- Complete PC-compatible Single Board Computer

## I/O

- SVGA controller Onboard with 3D Acceleration
  - Intel Graphics Media Accelerator 4500MHD
  - Generation 5.0 graphics engine with 10 cores
  - Dynamic Video Memory (up to 256MB)
  - DirectX 10 Support
  - Supports Windows Vista Aero “Glass” Effects
  - Analog SVGA Output
- Two Gigabit Ethernet
  - Intel 82567LM PHY + ICH9M Controller (PRO1000 Series)
  - Intel 82574IT Controller (PRO1000 Series)
  - 10/100/1000 Auto-negotiation
  - Jumbo Frame Support (9kB)
  - PXE network Boot
  - Smart Speed operation for automatic speed reduction on faulty cable plants
  - Automatic MDI/MDI-X crossover capable
- Software-configurable RS-232/422/485 serial ports
  - 16550 compatible UARTs for high-speed
  - 120 Ohm Termination resistors for RS-422/485 through BIOS Configuration
  - Each serial port connector can be configured as two limited serial ports, for a total of four serial ports
  - Fully jumperless configuration
- Advanced Digital I/O (aDIO)
  - One 8-bit bit-programmable I/O with Advanced Digital Interrupt Modes
  - One 4-bit port programmable as input or output
  - Event Mode Interrupt generates an interrupt when any input bit changes

- Match Mode Interrupt generates an interrupt when input bits match a preset value
  - External Strobe Mode latches 8 data inputs and generates an interrupt
  - Two Strobes can be configured as readable inputs
- Two USB 2.0 (Universal Serial Bus) Ports
  - Supports 480 Mb/s (high-speed), 12Mb/s (full-speed), and 1.5Mbps (low speed) peripherals
  - 500 mA @ 5 Vdc provided per port
  - USB Boot capability
- Serial ATA (SATA) with RAID support
  - Transfer rate up to 3Gb/sec
  - Integrated AHCI controller
  - RAID 0 and 1 supported through Intel Matrix Storage Technology
  - Compatibility mode supports legacy operating systems.
- SATA Disk Chip Socket
  - Miniature SATA Flash Disk Chip
  - Capacities up to 32GB<sup>1</sup>
  - Natively supported by all major operating systems
- Utility port
  - PC/AT compatible keyboard port
  - PS/2 Mouse Port
  - Speaker port (0.1W output)
  - Hardware Reset input
  - Soft Power Button input
  - Battery input for Real Time Clock
- Power I/O
  - ATX Power signals

## BIOS

- RTD Enhanced AMI BIOS
- User-configurable using built-in Setup program
- Nonvolatile storage of CMOS settings without battery
- Boot Devices
  - Standard Devices (floppy disk, hard disk, etc.)
  - SATA Disk Chip
  - USB Device
  - Network
  - Fail Safe Boot ROM
    - Surface-mount Flash chip that holds ROM-DOS™
- Quick Boot mode

---

1. During the time of this manual's publication, 32GB was the largest available SATA Disk Chip capacity



The next figure shows a simplified block diagram of the CME34M cpuModule.



The cpuModule uses the RTD Enhanced AMI BIOS. Drivers in the BIOS allow booting from hard disk, Disk Chip, or boot block flash, thus enabling the system to be used with traditional disk drives or nonmechanical drives. Boot from USB devices and network are also supported.

The `cpuModule` and BIOS are also compatible with any real-time operating systems for PC compatible computers, although these may require creation of custom drivers to use the `aDIO` and watchdog timer.



# Specifications

## Physical Characteristics

- Dimensions: 116mm L x 99mm W x 24mm H (4.6"L x 3.9"W x 0.95"H)
- Weight: Approximately 0.20 Kg (0.44 lb.) with Heatsink

## Power Consumption

Exact power consumption depends on the actual application. Table 2 lists power consumption for typical configurations and clock speeds.

**Table 2** cpuModule Power Consumption

Module	Speed	RAM	Power, Typ.	Heavy CPU Load	Heavy CPU & Gfx Load
CME34MVD1860	1.86 GHz	1024 MB	21.0 W	31.5 W	33.0 W
CME34MVD1200	1.20 GHz	1024 MB	15.8 W	21.0 W	23.0 W
CME34MCS1200	1.20 GHz	1024 MB	13.3 W	16.0 W	19.5 W

## Operating Conditions

**Table 3** Operating Conditions

Symbol	Parameter	Test Condition	Min.	Max.
V <sub>CC5</sub>	5V Supply Voltage		4.75V	5.25V
V <sub>CC3</sub>	3.3V Supply Voltage		n/a <sup>1</sup>	n/a
V <sub>CC12</sub>	12V Supply Voltage		n/a <sup>1</sup>	n/a
V <sub>CCSTBY</sub>	5V Standby Voltage <sup>2</sup>		4.75V	5.25V
I <sub>CCSTBY</sub>	5V Standby Current <sup>2</sup>		-	500mA
T <sub>a</sub>	Ambient Operating Temperature <sup>3</sup>	MVD1860	-40	+70C
T <sub>a</sub>	Ambient Operating Temperature <sup>3</sup>	MVD1200 MCS1200	-40	+85C
T <sub>s</sub>	Storage Temperature		-25	+85C
Rh	Humidity	Non-Condensing	0	90%
MTBF	Mean Time Before Failure	23 C	275,000 hours	

1. The 12V and external +3.3V rails are not used by the cpuModule. Any requirements on these signals are driven by other components in the system, such as a PCI device.
2. 5V Standby is used to power the board when the main supply is turned off (power down modes S3-S5). It is not required for board operation.
3. With supplied heat sink solution. Depending on the CPU usage, performance may degrade as the ambient temperature approaches the maximum. Contact RTD Tech Support for more information.

## Electrical Characteristics

The table below lists the Electrical Characteristics of the CME34M. Operating outside of these parameters may cause permanent damage to the cpuModule.

**Table 4 Electrical Characteristics**

Symbol	Parameter	Test Condition	Min.	Max.
<b>USB Ports</b>				
I <sub>OC</sub>	Overcurrent Limit	Each port	0.5A	5.0A
<b>SVGA Port</b>				
V <sub>OH</sub>	Output Voltage High HSYNC, VSYNC	I <sub>OH</sub> = -8.0 mA	2.4 V	3.3 V
V <sub>OL</sub>	Output Voltage Low HSYNC, VSYNC	I <sub>OL</sub> = 8.0 mA	0.0 V	0.5 V
V <sub>OH</sub>	Output Voltage High DDC_*	I <sub>OH</sub> = -4.0 mA	2.4 V	3.3 V
V <sub>OL</sub>	Output Voltage Low DDC_*	I <sub>OL</sub> = 8.0 mA	0.0 V	0.4 V
V <sub>IH</sub>	Input Voltage High DDC_*	—	2.0 V	5.5 V
V <sub>IL</sub>	Input Voltage Low DDC_*	—	-0.3 V	0.8 V
I <sub>DDCvcc</sub>	Supply Current for DDC Electronics	—		500 mA
<b>Serial Ports - RS-232</b>				
V <sub>OH</sub>	Output Voltage High	R <sub>L</sub> = 3 k	5.0 V	10.0 V
V <sub>OL</sub>	Output Voltage Low	R <sub>L</sub> = 3 k	-10.0 V	-5.0 V
V <sub>IH</sub>	Input Voltage High	—	2.4 V	25 V
V <sub>IL</sub>	Input Voltage Low	—	-25 V	0.8 V
<b>Serial Ports - RS-422/485</b>				
V <sub>OD1</sub>	Differential Output	R <sub>L</sub> = 50 Ohm	2.0 V	6.0 V
V <sub>OD2</sub>	Differential Output	R <sub>L</sub> = 27 Ohm	1.5 V	6.0 V
V <sub>OC</sub>	Common Mode Output	R <sub>L</sub> = 27 or 50 Ohm	0.0 V	3.0 V
V <sub>TH</sub>	Differential Input Threshold	-7V < V <sub>CM</sub> < 7V	-0.3 V	0.3 V
V <sub>I</sub>	Absolute Max Input Voltage	—	-25 V	25 V
<b>aDIO</b>				
V <sub>OH</sub>	Output Voltage High	I <sub>OH</sub> = -4.0 mA	2.4 V	3.3 V
V <sub>OL</sub>	Output Voltage Low	I <sub>OL</sub> = 8.0 mA	0.0 V	0.4 V
V <sub>IH</sub>	Input Voltage High <sup>1</sup>	—	2.0 V	5.5 V
V <sub>IL</sub>	Input Voltage Low <sup>1</sup>	—	-0.5 V	0.8 V
I <sub>ADIOvcc</sub>	Supply current	—		500 mA

**Table 4 Electrical Characteristics**

Symbol	Parameter	Test Condition	Min.	Max.
<b>Utility Port Connector (CN5)</b>				
$V_{RTC}$	Input RTC Voltage <sup>2</sup>	—	2.0V	3.6 V
$I_{UTILVCC}$	Utility Supply Current	—		500 mA

1. Maximum DC undershoot below ground must be limited to either 0.5V or 10mA. During transitions, the device pins may undershoot to -2.0V or overshoot to 7.0V, provided it is less than 10ns, with the forcing current limited to 200 mA.
2. Only required to maintain date and time when power is completely removed from the system. Not required for board operation.

## Contact Information

RTD Embedded Technologies, Inc.  
103 Innovation Blvd.  
State College, PA 16803-0906  
USA

**Phone:** +1-814-234-8087

**Fax:** +1-814-234-5218

**E-mail:** sales@rtd.com  
techsupport@rtd.com

**Internet:** <http://www.rtd.com>



## Chapter 2      Getting Started

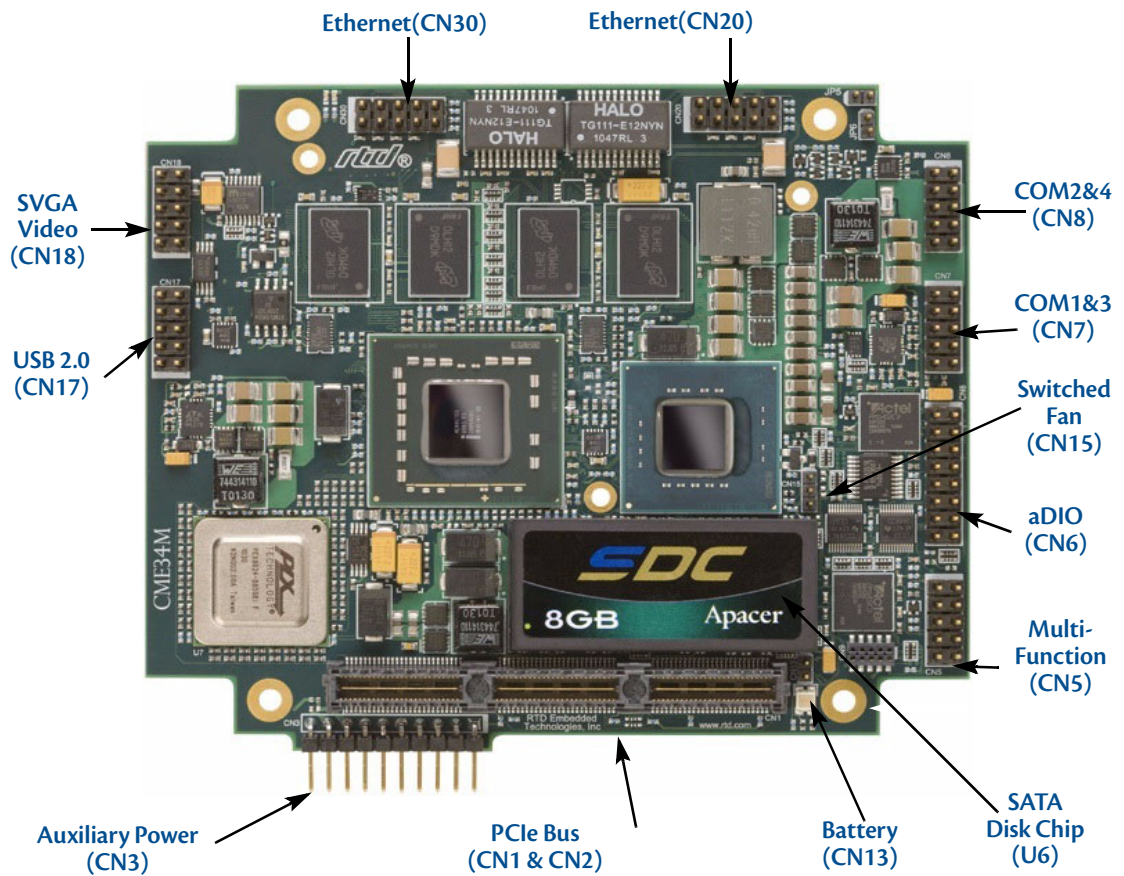
For many users, the factory configuration of the CME34M cpuModule can be used to get a PC/104 system operational. You can get your system up and running quickly by following the simple steps described in this chapter, which are:

1. Before connecting the cpuModule, the user must be properly grounded to prevent electrostatic discharge (ESD). For more information, refer to *Proper Grounding Techniques* on page 22.
2. Connect power.
3. Connect the utility harness.
4. Connect a keyboard.
5. Default BIOS configuration.
6. Fail Safe Boot ROM.
7. Connect a VGA monitor to the SVGA connector.

Refer to the remainder of this chapter for details on each of these steps.

## Connector Locations

Figure 3 shows the connectors and the SATA Disk Chip socket of the CME34M cpuModule.



**Figure 3 CME34M Connector Locations**



**Note** Pin 1 of each connector is indicated by a white silk-screened square on the top side of the board and a square solder pad on the bottom side of the board.

**Table 5 CME34M Basic Connectors**

Connector	Function	Size and Pitch	Mating Connector
<b>CN1</b>	PCIe/104 Type 2 Bus (Top)	156-pin, 0.635mm	Samtec ASP-129646-03
<b>CN2</b>	PCIe/104 Type 2 Bus (Bottom)	156-pin, 0.635mm	Samtec ASP-129637-03
<b>CN3</b>	Auxiliary Power	1x10, 0.1"	FCI 65039-027LF
<b>CN5</b>	Utility Port	2x5, 0.1"	3M 89110-0001
<b>CN6</b>	aDIO	2x8, 0.1"	3M 89116-0001
<b>CN7</b>	Serial Port 1 (COM1&3)	2x5, 0.1"	3M 89110-0001
<b>CN8</b>	Serial Port 2 (COM2&4)	2x5, 0.1"	3M 89110-0001
<b>CN13</b>	RTC Battery Input (optional)	1x2, 2mm	FCI 69305-002LF
<b>CN15</b>	Fan Power (switched)	1x3, 2mm	FCI 69305-003LF
<b>CN17</b>	USB 2.0	2x5, 0.1"	3M 89110-0001
<b>CN18</b>	Video (SVGA)	2x5, 0.1"	3M 89110-0001
<b>CN20</b>	Ethernet	2x5, 0.1"	3M 89110-0001
<b>CN30</b>	Ethernet	2x5, 0.1"	3M 89110-0001
<b>U6</b>	SATA Disk Chip Socket	18-pin, 0.1"	n.a.



**WARNING** *If you connect power incorrectly, the module will almost certainly be damaged or destroyed. Such damage is not covered by the RTD warranty! Please verify connections to the module before applying power.*

Power is normally supplied to the cpuModule through the PCIe bus connectors (**CN1** or **CN2**). If you are placing the cpuModule onto a PC/104 stack that has a power supply, you do not need to make additional connections to supply power.

If you are using the cpuModule without a PC/104 stack or with a stack that does not include a power supply, refer to *Auxiliary Power (CN3)* on page 24 for more details.

## Selecting the Stack Order for the CME34M

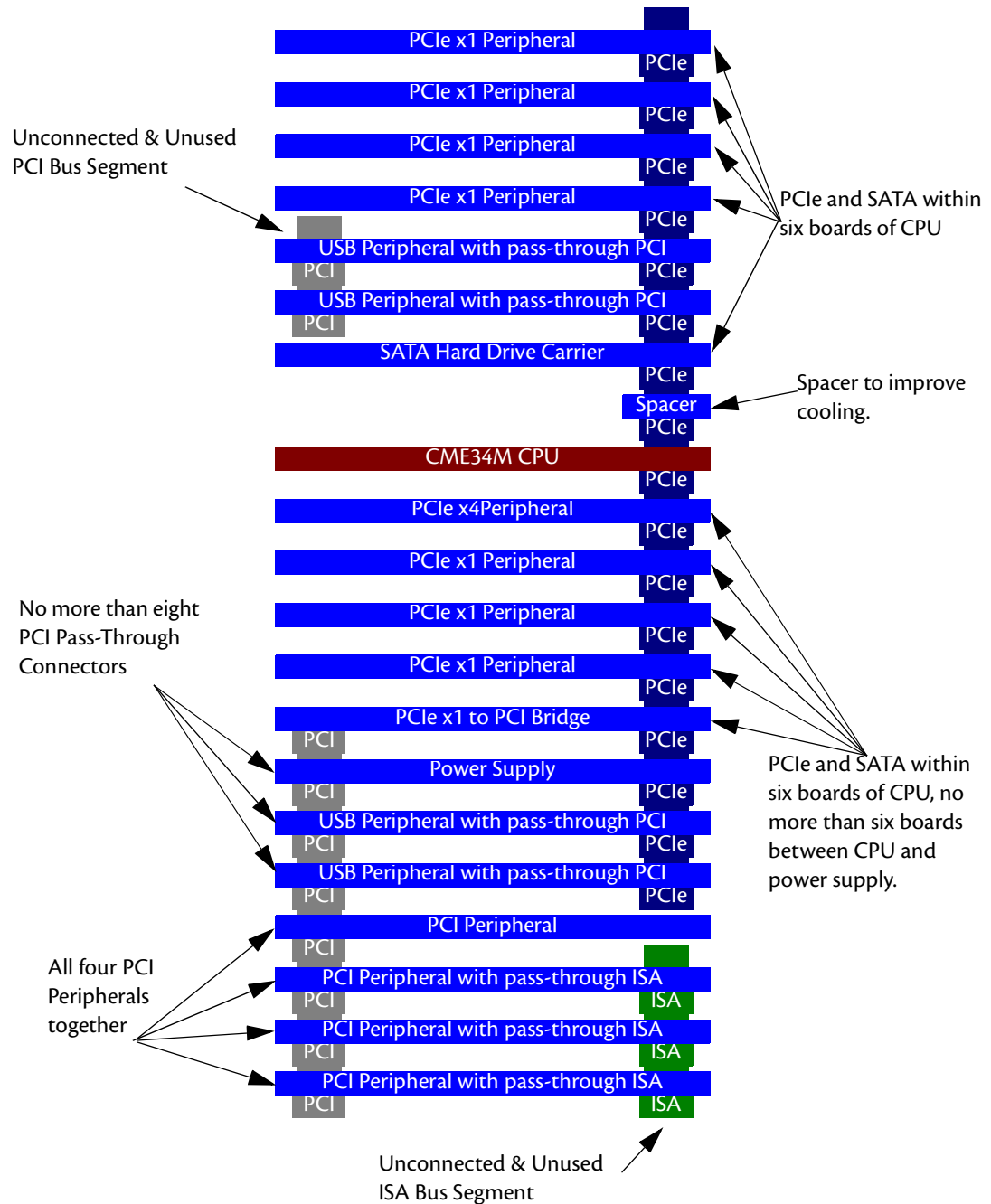
There are several things to consider when selecting the order of boards in the stack. Before selecting the order, be sure to determine which bus connector on each board is the “Active” bus. Typically, if a peripheral module has both PCIe and PCI bus connectors, only the PCIe is active and the PCI is pass-through. The following is a list of rules to use to determine the stack order:

1. The PCIe connectors above and below the CPU have completely separate signals. Therefore it is possible to attach boards to the PCIe connector above and below the CPU.
2. Any board that uses a PCIe or SATA link must be within six boards of the CPU.
3. To preserve power integrity, it is recommended that there be no more than six boards between the CPU and the power supply.
4. In order to maintain maximum performance over the full temperature range, it is recommended that a PCIe spacer be used between the CPU and any board immediately above it.
5. A maximum of four PCI boards may be attached to any PCI bus.
6. The PCIe to PCI bridge must be at one end of the PCI bus segment, and all of the peripheral cards at the other end. There may be up to eight PCI pass-through connectors between the PCIe to PCI bridge and the peripheral cards.
7. There must be no more than two boards between the first PCI peripheral and the last PCI peripheral. If there are four PCI peripheral cards in a PCI bus segment, there may not be any PCI pass-through connections between them.



## Stack Example

The figure below shows an example of a complete system stack. Most systems will be a subset of this example. This example stack may be further expanded with PCIe to PCIe bridges, or a PCIe to PCI bridge.



**Figure 4 System Stacking Example**

## Connecting to the Stack

The bus connectors of the cpuModule are simply plugged onto a PC/104 stack to connect to other devices. Follow the procedure below to ensure that stacking of the modules does not damage connectors or electronics.



**WARNING** Do not force the module onto the stack! Wiggling the module or applying too much pressure may damage it. If the module does not readily press into place, remove it, check for bent pins or out-of-place keying pins, and try again.

---

For mechanical dimensions, including board-to-board spacing, see *Physical Dimensions* on page 68.

1. Turn off power to the PC/104 system or stack.
2. Always work at an ESD protected workstation, and wear a grounded wrist-strap.
3. Select and install stand-offs to properly position the cpuModule on the stack.
4. Remove the cpuModule from its anti-static bag.
5. Check that pins of the bus connector are properly positioned.
6. Check the stacking order; make sure all of the busses used by the peripheral cards are connected to the cpuModule.
7. Hold the cpuModule by its edges and orient it so the bus connector pins line up with the matching connector on the stack.
8. Gently and evenly press the cpuModule onto the PC/104 stack.

## Connecting the Utility Cable

The multi-function connector (**CN5**) implements the following interfaces:

- PC/AT compatible keyboard
- PS/2 mouse port
- Speaker port (0.1W output)
- Hardware Reset input
- Battery input for Real Time Clock
- Soft Power Button input

To use these interfaces, you must connect to the utility port connector (**CN5**). The utility harness from the RTD cable kit provides a small speaker, two connectors for the keyboard and mouse, a push-button for resetting the system, a soft-power button, and a lithium battery to provide backup power for the real time clock.

Refer to *Utility Port Connector (CN5)* on page 25 to connect devices to the utility port connector.

## Connecting a Keyboard

You may plug a PC/AT compatible keyboard directly into the PS/2 connector of the utility harness in the cable kit. You may also use a USB keyboard plugged into any of the USB connectors.



**Note** Many keyboards are switchable between PC/XT and AT operating modes, with the mode usually selected by a switch on the back or bottom of the keyboard. For correct operation with this cpuModule, you must select AT mode.

## Booting the CME34M cpuModule for the First Time

You can now apply power to the cpuModule. You will see:

- A greeting message from the VGA BIOS (if the VGA BIOS has a sign-on message)
- The cpuModule BIOS version information
- A message requesting you press **Delete** to enter the Setup program
- A message to press **F11** to choose the boot device

If you don't press **Delete**, the cpuModule will try to boot from the current settings. If you press **Delete**, the cpuModule will enter Setup. Once you have configured the cpuModule using Setup, save your changes and reboot.



**Note** You may miss the initial sign-on messages if your monitor takes a while to power on.

**Note** By default, cpuModules are shipped with Fail Safe Boot ROM enabled. When Fail Safe Boot ROM is enabled, the system will boot to it exclusively.





## Chapter 3 Connecting the cpuModule

This chapter provides information on all CME34M cpuModule connectors.

*Proper Grounding Techniques* — page 22

*Connector Locations* — page 22

*Auxiliary Power (CN3)* — page 24

*Utility Port Connector (CN5)* — page 25

*SVGA Video Connector (CN18)* — page 28

*SATA Disk Chip Socket (U6)* — page 29

*Serial Port 1 (CN7) and Serial Port 2 (CN8)* — page 30

*Advanced Digital I/O (aDIO™) Port (CN6)* — page 35

*USB 2.0 Connector (CN17)* — page 36

*Ethernet (10/100/1000Base-T and -TX) Connectors (CN20 and CN30)* — page 37

*PCIe/104 Type 2 Bus (CN1 - Top and CN2 - Bottom)* — page 38

*Optional RTC Battery Input (CN13)* — page 42

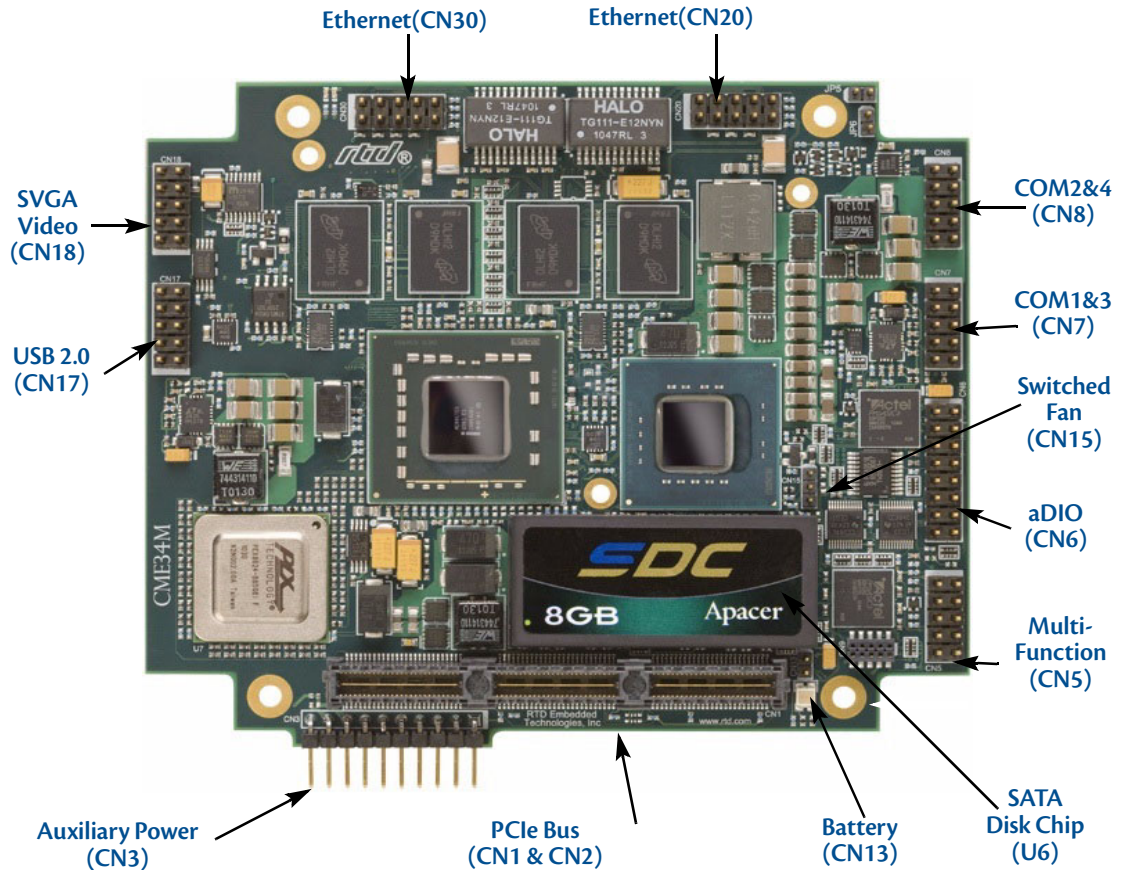
*Fan Power, Switched (CN15)* — page 42

## Proper Grounding Techniques

Before removing the CME34M from its static bag, proper grounding techniques must be used to prevent electrostatic discharge (ESD) damage to the cpuModule. Common grounding procedures include an anti-static mat on a workbench, which may connect to an anti-static wrist strap (also known as an ESD wrist strap) on the wrist of the technician or engineer.

## Connector Locations

Figure 5 shows the connectors and the SATA Disk Chip socket of the CME34M cpuModule.



**Figure 5 CME34M Connector Locations**



**Note** Pin 1 of each connector is indicated by a white silk-screened square on the top side of the board and a square solder pad on the bottom side of the board. Pin 1 of the bus connectors match when stacking PC/104 modules.

**Table 6 CME34M Basic Connectors**

Connector	Function	Size and Pitch	Mating Connector
<b>CN1</b>	PCIe/104 Type 2 Bus (Top)	156-pin, 0.635mm	Samtec ASP-129646-03
<b>CN2</b>	PCIe/104 Type 2 Bus (Bottom)	156-pin, 0.635mm	Samtec ASP-129637-03
<b>CN3</b>	Auxiliary Power	1x10, 0.1"	FCI 65039-027LF
<b>CN5</b>	Utility Port	2x5, 0.1"	3M 89110-0001
<b>CN6</b>	aDIO	2x8, 0.1"	3M 89116-0001
<b>CN7</b>	Serial Port 1 (COM1&3)	2x5, 0.1"	3M 89110-0001
<b>CN8</b>	Serial Port 2 (COM2&4)	2x5, 0.1"	3M 89110-0001
<b>CN13</b>	RTC Battery Input (optional)	1x2, 2mm	FCI 69305-002LF
<b>CN15</b>	Fan Power (switched)	1x3, 2mm	FCI 69305-003LF
<b>CN17</b>	USB 2.0	2x5, 0.1"	3M 89110-0001
<b>CN18</b>	Video (SVGA)	2x5, 0.1"	3M 89110-0001
<b>CN20</b>	Ethernet	2x5, 0.1"	3M 89110-0001
<b>CN30</b>	Ethernet	2x5, 0.1"	3M 89110-0001
<b>U6</b>	SATA Disk Chip Socket	18-pin, 0.1"	n.a.

## Auxiliary Power (CN3)

The Auxiliary Power connector (**CN3**) can be used to supply power to devices that are attached to the cpuModule. These devices include hard drive, front-end boards for data acquisition systems, and other devices.

Power can also be conveyed to the module through the Auxiliary Power connector (**CN3**). The cpuModule only requires +5 VDC and ground for operation. A Standby +5V may also be supplied to allow the system to support Standby power states.



**Note** Although it is possible to power the cpuModule through the Auxiliary Power connector, the preferred method is to power it through the bus connector from a power supply in the stack. The cpuModule can have large current transients during operation, which make powering it through wires difficult. Powering through the bus eliminates such problems as voltage drop and lead inductance.

If using the Auxiliary Power connector to power the system, care must be taken to ensure good power connections. The power and ground leads must be twisted together, or as close together as possible to reduce lead inductance. A separate lead must be used for each of the power pins. All 5V pins and all ground pins must be connected. Do not use wire smaller than 20 gauge, and the length of the wire must not exceed 2 ft. The power supply solution must be verified by measuring voltage at the Auxiliary Power Connector and verifying that it does not drop below 4.75 V. The voltage at the connector should be checked with an oscilloscope while the system is operational.



**WARNING** If you connect power incorrectly, the module will almost certainly be destroyed. Please verify power connections to the module before applying power.

**Table 7 Auxiliary Power Connector (CN3)<sup>1</sup>**

Pin	Signal	Function
1	GND	Ground
2	+5 V	+5 Volts DC
3	GND	Ground
4	+5 V	+5 Volts DC
5	GND	Ground
6	GND	Ground
7	+5 V	+5 Volts DC
8	+5V_STDBY	+5V Standby (ATX)
9	+5 V	+5 Volts DC
10	PSON#	Power Supply On (ATX)

1. For more information on the ATX style signals, +5V Standby and PSON#, refer to the Power Management section in Chapter 4, *Using the cpuModule*.



## Utility Port Connector (CN5)

The utility port connector implements the following functions:

- PC/AT compatible keyboard port
- PS/2 mouse port
- Speaker port (0.1W output)
- Hardware Reset input
- Soft Power Button input
- Battery input for Real Time Clock

Table 8 provides the pinout of the multi-function connector.

**Table 8 Utility Port Connector (CN5)**

Pin	Signal	Function	In/Out
1	SPKR	Speaker Output (open collector)	out
2	PWR	+5 V	out
3	RESET#	Manual Push-Button Reset	in
4	PWRSW#	Soft Power Button	in
5	KBD	Keyboard Data	in/out
6	KBC	Keyboard Clock	out
7	GND	Ground	—
8	MSC	Mouse Clock	out
9	BAT	RTC Battery Input	in
10	MSD	Mouse Data	in/out

Facing the connector pins, the pinout is:

9	7	5	3	1
BAT	GND	KBD	RESET#	SPKR
MSD	MSC	KBC	PWRSW#	PWR
10	8	6	4	2

### Speaker

A speaker output is available on pins 1 and 2 of the multi-function connector. These outputs are controlled by a transistor to supply 0.1 W of power to an external speaker. The external speaker should have 8  $\Omega$  impedance and be connected between pins 1 and 2.

## Keyboard

A PS/2 compatible keyboard can be connected to the multi-function connector. Usually PC keyboards come with a cable ending with a 5-pin male PS/2 connector. Table 9 lists the relationship between the multi-function connector pins and a standard PS/2 keyboard connector.

**Table 9 Keyboard Connector Pins (CN5)**

Pin	Signal	Function	PS/2
5	KBD	Keyboard Data	1
6	KBC	Keyboard Clock	5
7	GND	Ground	3
2	PWR	Keyboard Power (+5 V)	4

To ensure correct operation, check that the keyboard is either an AT compatible keyboard or a switchable XT/AT keyboard set to AT mode. Switchable keyboards are usually set by a switch on the back or bottom of the keyboard.

## Mouse

A PS/2 compatible mouse can be connected to the multi-function connector. Table 10 lists the relationship between the multi-function connector pins and a standard PS/2 mouse connector.

**Table 10 Mouse Connector Pins (CN5)**

Pin	Signal	Function	PS/2
10	MSD	Mouse Data	1
8	MSC	Mouse Clock	5
7	GND	Ground	3
2	PWR	Keyboard Power (+5 V)	4

## System Reset

Pin 3 of the multi-function connector allows connection of an external push-button to manually reset the system. The push-button should be normally open, and connect to ground when pushed. The type of reset generated by this button can be set in the BIOS configuration utility.

## Soft Power Button

Pin 4 of the multi-function connector allows connection of an external push-button to send a soft power signal to the system. The push-button should be normally open, and connect to ground when pushed. For more information on the modes of the Soft Power Button, refer to the *Power Management* section in Chapter 4, *Using the cpuModule*.

## Battery

Pin 9 of the multi-function connector is the connection for an external backup battery. This battery is used by the cpuModule when system power is removed in order to preserve the date and time in the real time clock.

Connecting a battery is only required to maintain time when power is completely removed from the cpuModule. A battery is not required for board operation.



**WARNING** The optional RTC battery input connector (**CN13**) should be left unconnected if the multi-function connector (**CN5**) has a battery connected to pin 9.

---

## SVGA Video Connector (CN18)

Table 11 provides the pinout of the video connector.

**Table 11 SVGA Video Connector (CN18)**

Pin	Signal	Function	In/Out
1	VSYNC	Vertical Sync	out
2	HSYNC	Horizontal Sync	out
3	DDCSCL	Monitor Communications Clock	out
4	RED	Red Analog Output	out
5	DDCSDA	Monitor Communications Data	bidirectional
6	GREEN	Green Analog Output	out
7	PWR	+5 V	out
8	BLUE	Blue Analog Output	out
9	GND	Ground	out
10	GND	Ground	out

Facing the connector pins of the SVGA Video connector (**CN18**), the pinout is:

9	7	5	3	1
GND	PWR	DDCSDA	DDCSCL	VSYNC
GND	BLUE	GREEN	RED	HSYNC
10	8	6	4	2

## SATA Disk Chip Socket (U6)

The SATA Disk Chip socket is an 18-pin socket in a 32-pin format that supports miniature SATA flash disk chips. The socket allows a true SATA device to be attached to the board with either a socketed or soldered connection. Such devices are supported by all major operating systems, and do not require special drivers.

**Table 12 SATA Disk Chip Socket (U6)<sup>1</sup>**

Pin	Signal	Pin	Signal
1	GND	32	Vcc (3.3V)
2	RX+	31	GND
3	RX-	30	n.c.
4	GND	29	n.c.
5	TX-	28	n.c.
6	TX+	27	n.c.
7	GND	26	Reserved
8	no pin	25	no pin
9	no pin	24	no pin
10	no pin	23	no pin
11	no pin	22	no pin
12	no pin	21	no pin
13	no pin	20	no pin
14	no pin	19	no pin
15	Reserved	18	Reserved
16	n.c.	17	GND

1. TX and RX are the transmit and receive respectively of the Disk Chip.

## Installing and Configuring the SATA Disk Chip

To ensure proper installation of the SATA Disk Chip, follow the following configuration steps:

1. Always work at an ESD protected workstation, and wear a grounded wrist-strap.
2. Remove power from the system
3. Insert the Disk Chip in the SATA Disk Chip Socket (**U6**) aligning pin 1 with the square solder pad on the board.
4. Apply power to the system.
5. Re-enter the BIOS and set the boot order of the system accordingly.

## Serial Port 1 (CN7) and Serial Port 2 (CN8)

Serial Port 1 (COM1) is implemented on connector **CN7**, and Serial Port 2 is implemented on connector **CN8**. The serial ports are normally configured as PC compatible full-duplex RS-232 ports, but you may use the BIOS Setup program to reconfigure these ports as half-duplex RS-422 or full-duplex RS-422 or RS-485. If you reconfigure the ports, you must also select the I/O address and corresponding interrupt using Setup. Table 13 provides the standard I/O addresses and corresponding interrupts.

**Table 13 Serial Port Settings**

I/O Address (hex)	IRQ
03F8	IRQ4
02F8	IRQ3
03E8	IRQ4
02E8	IRQ3

### Serial Port UART

The serial ports are implemented with a 16550-compatible UART (Universal Asynchronous Receiver/Transmitter). This UART is capable of baud rates up to 115.2 kbaud in 16450 and 16550A compatible mode, and includes a 16-byte FIFO. Refer to any standard PC-AT hardware reference for the register map of the UART. For more information about programming UARTs, refer to Appendix D.

### RS-232 Serial Port (Default)

The default serial port mode is full-duplex RS-232. With this mode enabled, the serial port connectors must be connected to RS-232 compatible devices. Table 14 provides the serial port connector pinout and shows how to connect to an external DB-25 or DB-9 compatible serial connector.

**Table 14 Serial Port in RS-232 Mode**

Pin	Signal	Function	In/Out	DB-25	DB-9
1	DCD	Data Carrier Detect	in	8	1
2	DSR	Data Set Ready	in	6	6
3	RXD	Receive Data	in	3	2
4	RTS	Request To Send	out	4	7
5	TXD	Transmit Data	out	2	3
6	CTS	Clear To Send	in	5	8
7	DTR	Data Terminal Ready	out	20	4
8	RI	Ring Indicate	in	22	9
9	GND	Signal Ground	—	7	5
10	GND	Signal Ground	—	—	—

Facing the serial port's connector pins, the pinout is:

9	7	5	3	1
GND	DTR	TXD	RXD	DCD
GND	RI	CTS	RTS	DSR
10	8	6	4	2

## RS-422 or RS-485 Serial Port

You may use Setup to configure the serial ports as RS-422 or RS-485. In this case, you must connect the serial port to an RS-422 or RS-485 compatible device.

When using RS-422 or RS-485 mode, you can use the serial ports in either half-duplex (two-wire) or full-duplex (four-wire) configurations. For half-duplex (2-wire) operation, you must connect RXD+ to TXD+, and connect RXD– to TXD–.



**Note** The *cpuModule* has a 120  $\Omega$  termination resistor. Termination is usually necessary on all RS-422 receivers and at the ends of the RS-485 bus. Termination resistors can be enabled in the BIOS setup utility.

When using full-duplex (typically in RS-422 mode), connect the ports as shown in Table 15.

**Table 15 Full-Duplex Connections**

Port 1	Port 2
RXD+	TXD+
TXD+	RXD+
RXD–	TXD–
TXD–	RXD–

When using half-duplex in RS-485 mode, connect the ports as shown in Table 16.

**Table 16 Half-Duplex RS-485 Mode**

From	To
Port 1 TXD+	Port 1 RXD+
Port 1 TXD–	Port 1 RXD–
Port 1 TXD+	Port 2 RXD+
Port 1 RXD–	Port 2 TXD–

## RS-422 and RS-485 Mode Pinout

Table 17 provides the serial port connector pinout when RS-422 or RS-485 modes are enabled.

**Table 17 Serial Port in RS-422/485 Mode**

Pin	Signal	Function	In/Out	DB-9
1	—	Reserved	—	1
2	—	Reserved	—	6
3	RXD-	Receive Data (-)	in	2
4	TXD+	Transmit Data (+)	out	7
5	TXD-	Transmit Data (-)	out	3
6	RXD+	Receive Data (+)	in	8
7	—	Reserved	—	4
8	—	Reserved	—	9
9	GND	Signal Ground	—	5
10	GND	Signal Ground	—	—

Facing the serial port connector, the pinout is:

9	7	5	3	1
GND	Rsvd	TXD-	RXD-	Rsvd
GND	Rsvd	RXD+	TXD+	Rsvd
10	8	6	4	2



**Note** When using the serial port in RS-485 mode, the serial transmitters are enabled and disabled under software control. The transmitters are enabled by manipulating the Request To Send (RTS\*) signal of the serial port controller. This signal is controlled by writing bit 1 of the Modem Control Register (MCR) as follows:

- If MCR bit 1 = 1, then  $RTS^* = 0$ , and serial transmitters are disabled
- If MCR bit 1 = 0, then  $RTS^* = 1$ , and serial transmitters are enabled

**Note** For more information on the serial port registers, including the MCR, refer to the Serial Port Programming reference in Appendix D.



## Dual Serial Port Modes

The serial port connectors can be configured as dual serial ports in the BIOS. The mapping between the connectors and COM port numbers is shown in Table 18. The supported combinations of serial port modes are listed in Table 19, which also includes a reference to the corresponding connector pinout.

**Table 18 Dual Serial Port Connections**

Connector	COM A	COM B
CN7	COM 1	COM 3
CN8	COM 2	COM 4

**Table 19 Dual Serial Port Modes**

COM A	COM B	Pinout Reference
RS-232	RS-232	Table 20
RS-422	RS-232	Table 21
RS-422	RS-422	Table 22
RS-485	RS-232	Table 21
RS-485	RS-485	Table 22

**Table 20 COM A (RS-232) and COM B(RS-232)**

Pin	Signal	Function	In/Out	DB-9
1	DCD1	COM A- Data Carrier Detect	in	1
2	RXD2	COM B- Receive Data	in	6
3	RXD1	COM A - Receive Data	in	2
4	RTS1	COM A - Request To Send	out	7
5	TXD1	COM A - Transmit Data	out	3
6	CTS1	COM A - Clear To Send	in	8
7	TXD2	COM B - Transmit Data	out	4
8	RI1	COM A - Ring Indicate	in	9
9	GND	Signal Ground	—	5
10	GND	Signal Ground	—	—

**Table 21 COM A (RS-422/485) and COM B (RS-232)**

Pin	Signal	Function	In/Out	DB-9
1	DCD1	COM A - Data Carrier Detect	in	1
2	RXD2	COM B - Receive Data	in	6
3	RXD1-	COM A - Receive Data (-)	in	2
4	TXD1+	COM A - Transmit Data (+)	out	7
5	TXD1-	COM A - Transmit Data (-)	out	3
6	RXD1+	COM A - Receive Data (+)	in	8
7	TXD2	COM B - Transmit Data	out	4
8	RI1	COM A - Ring Indicate	in	9
9	GND	Signal Ground	—	5
10	GND	Signal Ground	—	—

**Table 22 COM A (RS-422/485) and COM B (RS-422/485)**

Pin	Signal	Function	In/Out	DB-9
1	RXD2+	COM B - Receive Data (+)	in	1
2	RXD2-	COM B - Receive Data (-)	in	6
3	RXD1-	COM A - Receive Data (-)	in	2
4	TXD1+	COM A - Transmit Data (+)	out	7
5	TXD1-	COM A - Transmit Data (-)	out	3
6	RXD1+	COM A - Receive Data (+)	in	8
7	TXD2-	COM B - Transmit Data (-)	out	4
8	TXD2+	COM B - Transmit Data (+)	out	9
9	GND	Signal Ground	—	5
10	GND	Signal Ground	—	—

## Advanced Digital I/O (aDIO™) Port (CN6)

**CN6** is configured as an aDIO port. aDIO is 12 digital bits configured as 8-bit programmable and 4-bit port programmable I/O, providing any combination of inputs and outputs. Match, event, and strobe interrupt modes mean no more wasting valuable processor time polling digital inputs. Interrupts are generated when the 8-bit programmable digital inputs match a pattern, or on any value change event. Bit masking allows selecting any subgroup of 8 bits. The strobe input latches data into the bit programmable port and generates an interrupt. Refer to *Advanced Digital I/O Ports (aDIO™)*—page 50 for information on programming the aDIO.

**Table 23 aDIO Pinout**

CN6 Pin	Function	CN6 Pin	Function
1	P0-0	2	P0-1
3	P0-2	4	P0-3
5	P0-4	6	P0-5
7	P0-6	8	P0-7
9	strobe 0	10	strobe 1
11	P1-0	12	P1-1
13	P1-2	14	P1-3
15	GND	16	+5 V <sup>1</sup>

1. Available during standby.

## USB 2.0 Connector (CN17)

Two USB 2.0 compliant connectors are available on connector **CN17**. Table 24 provides the pinout of the USB connector.



**Note** For proper operation at USB 2.0 speeds, be sure to use a cable that is rated for USB 2.0, such as the cable kit supplied by RTD.

**Table 24 USB Connector (CN17)**

Pin	Signal	Function	In/Out
1	VCC1	Supply +5 V to USB1	out
2	VCC2	Supply +5 V to USB2	out
3	DATA1–	Bidirectional data line for USB1	in/out
4	DATA2–	Bidirectional data line for USB2	in/out
5	DATA1+	Bidirectional data line for USB1	in/out
6	DATA2+	Bidirectional data line for USB2	in/out
7	GND	Ground	out
8	GND	Ground	out
9	GND	Ground	out
10	GND	Ground	out

Facing the connector pins, the pinout of **CN17** is:

9	7	5	3	1
GND	GND	DATA1+	DATA1–	VCC1
GND	GND	DATA2+	DATA2–	VCC2
10	8	6	4	2

## Ethernet (10/100/1000Base-T and -TX) Connectors (CN20 and CN30)

This connector provides a 10/100/1000Base-T Ethernet connection. Table 25 provides the pinout of the Ethernet connector. For 1000Base-T, all four pairs are used for transmit and receive.

To use the onboard 10/100/1000 Ethernet controller, Ethernet must be enabled in the BIOS.

When enabled, the multi-color LED will blink to indicate an Ethernet connection. For more information, refer to the *Multi-Color LED* section on page 60.

**Table 25 Ethernet Connector (CN20)**

RJ-45 Pin	10-Pin DIL Pin	Signal	Function
3	1	B+(RX+)	Receive+(10/100)
6	2	B-(RX-)	Receive-(10/100)
4	3	C+	
5	4	C-	
1	5	A+(TX+)	Transmit+(10/100)
2	6	A-(TX-)	Transmit-(10/100)
7	7	D+	
8	8	D-	
—	9	AGND	Ethernet Ground
—	10	AGND	Ethernet Ground

9	7	5	3	1
AGND	D+	A+	C+	B+
AGND	D+	A-	C+	B-
10	8	6	4	2

## PCIe/104 Type 2 Bus (CN1 - Top and CN2 - Bottom)

Connector **CN1** and **CN2** carries the signals of the PCIe/104 PCIe bus. These signals match definitions found in the **PCI/104-Express & PCIe/104 Specification Version 2.01** from the PC/104 Embedded Consortium. Table 26 lists the pinouts of the PC/104-Express bus connector.



**WARNING** Not all PCIe cards are compatible with the PCIe/104 Type 2 connector. Be sure that all of the boards attached to this bus are compatible before powering the system.

**Table 26 PCIe/104 Type 2 Bus Signal Assignments (Top View)<sup>1</sup>**

Pin	Signal	Signal	Pin
1	USB_OC#	PE_RST#	2
3	+3.3V	+3.3V	4
5	USB_1p	USB_0p	6
7	USB_1n	USB_0n	8
9	GND	GND	10
11	PEx1_1Tp	PEx1_0Tp	12
13	PEx1_1Tn	PEx1_0Tn	14
15	GND	GND	16
17	PEx1_2Tp	PEx1_3Tp	18
19	PEx1_2Tn	PEx1_3Tn	20
21	GND	GND	22
23	PEx1_1Rp	PEx1_0Rp	24
25	PEx1_1Rn	PEx1_0Rn	26
27	GND	GND	28
29	PEx1_2Rp	PEx1_3Rp	30
31	PEx1_2Rn	PEx1_3Rn	32
33	GND	GND	34
35	PEx1_1Clkp	PEx1_0Clkp	36
37	PEx1_1Clkn	PEx1_0Clkn	38
39	+5V_Always	+5V_Always	40
41	PEx1_2Clkp	PEx1_3Clkp	42
43	PEx1_2Clkn	PEx1_3Clkn	44
45	CPU_DIR	PWRGOOD	46
47	SMB_DATA	Reserved	48
49	SMB_CLK	Reserved	50
51	n.c.	PSON#	52

+5 Volts

**Table 26 PCIe/104 Type 2 Bus Signal Assignments (Top View)<sup>1</sup>**

Pin	Signal	Signal	Pin
53	STK0	STK1	54
55	GND	GND	56
57	PEx4_1T(0)p	PEx4_0T(0)p	58
59	PEx4_1T(0)n	PEx4_0T(0)n	60
61	GND	GND	62
63	PEx4_1T(1)p	PEx4_0T(1)p	64
65	PEx4_1T(1)n	PEx4_0T(1)n	66
67	GND	GND	68
69	PEx4_1T(2)p	PEx4_0T(2)p	70
71	PEx4_1T(2)n	PEx4_0T(2)n	72
73	GND	GND	74
75	PEx4_1T(3)p	PEx4_0T(3)p	76
77	PEx4_1T(3)n	PEx4_0T(3)n	78
79	GND	GND	80
81	SATA_1Tp	SATA_0Tp (CN1 only)	82
83	SATA_1Tn	SATA_0Tn (CN1 only)	84
85	GND	GND	86
87			88
89			90
91	GND	GND	92
93	Reserved	Reserved	94
95	Reserved	Reserved	96
97	GND	GND	98
99	Reserved	Reserved	100
101	Reserved	Reserved	102
103	GND	GND	104

+5 Volts

**Table 26 PCIe/104 Type 2 Bus Signal Assignments (Top View)<sup>1</sup>**

Pin	Signal	Signal	Pin
105	STK2	Reserved	106
107	GND	GND	108
109	PEx4_1R(0)p	PEx4_0R(0)p	110
111	PEx4_1R(0)n	PEx4_0R(0)n	112
113	GND	GND	114
115	PEx4_1R(1)p	PEx4_0R(1)p	116
117	PEx4_1R(1)n	PEx4_0R(1)n	118
119	GND	GND	120
121	PEx4_1R(2)p	PEx4_0R(2)p	122
123	PEx4_1R(2)n	PEx4_0R(2)n	124
125	GND	GND	126
127	PEx4_1R(3)p	PEx4_0R(3)p	128
129	PEx4_1R(3)n	PEx4_0R(3)n	130
131	GND	GND	132
133	SATA_1Rp	SATA_0Rp (CN1 only)	134
135	SATA_1Rn	SATA_0Rn (CN1 only)	136
137	GND	GND	138
139			140
141			142
143	GND	GND	144
145	Reserved	Reserved	146
147	Reserved	Reserved	148
149	GND	GND	150
151	Reserved	Reserved	152
153	Reserved	Reserved	154
155	GND	GND	156

+12 Volts

1. Signals marked with (#) are active low.

## PCIe/104 Type 2 Compatibility

The PCIe/104 Type 2 connector is compatible with any PCI/104-Express or PCIe/104 peripheral module that does not use the x16 Link. This includes any card that uses the PCIe x1 links, USB, or a power supply. In addition, this connector can be used to add SATA devices to the system.

If a card is installed that is not compatible with the Type 2 connector, the CPU will keep the system in soft-off, and the LED will be Cyan to indicate that there is a Bus Stacking Error. If this feature is not desired, JP6 can be installed to disable the Bus Stacking Error feature.



## PCIe Link Configuration

This cpuModule supports a total of eight PCIe x1 links. The chipset, however, only provides five PCIe x1 links. Four of the links on CN1 and CN2 are connected directly to the chipset. The other four are connected through a PCIe packet switch, and share the bandwidth of a single x1 link back to the chipset. The links that are connected to the PCIe switch do not support wake from S3 (D3cold). Only wake from S1 is supported. Table 27 and Table 28 below shows the configuration of the PCIe x1 links on CN1 and CN2.

**Table 27 CN1 Link Configuration**

Link	BIOS Name	Location	Connection	S3 Wake support	PCIe Peer-To-Peer
0	Link 0	Closest to CPU	Direct	Yes	No
1	PCIe Switch		Shared	No	To other Shared
2	PCIe Switch		Shared	No	To other Shared
3	PCIe Switch	Farthest from CPU	Shared	No	To other Shared

**Table 28 CN2 Link Configuration**

Link	BIOS Name	Location	Connection	S3 Wake support	PCIe Peer-To-Peer
3	Link 3	Closest to CPU	Direct	Yes	No
2	Link 2		Direct	Yes	No
1	Link 1		Direct	Yes	No
0	PCIe Switch	Farthest from CPU	Shared	No	To other Shared

## PCIe Peer-To-Peer

Peer-to-Peer transactions are transactions directly between two PCIe peripheral cards. An example of this is writing data directly from a data acquisition card to a DSP card, without first writing to the host CPU's memory. The PCIe links that are directly connected to the chipset do not support Peer-to-Peer transactions. The shared PCIe links support peer-to-peer transactions to other shared links. This is reflected in Table 27 above.

Peer-to-peer transactions may also be performed between peripheral cards attached to the x4 links. However, you cannot do a peer-to-peer transaction between a peripheral on a x4 link and a peripheral on a x1 link.

## Optional RTC Battery Input (CN13)

The optional RTC battery input is the connection for an external backup battery. This battery is used by the cpuModule when system power is removed in order to preserve the date and time in the real time clock.

Connecting a battery is only required to maintain time when power is completely removed from the cpuModule. A battery is not required for board operation.

**Table 29 Optional RTC Battery Input (CN13)**

Pin	Signal	Function
1	BAT	RTC Battery Input
2	GND	Ground



**WARNING** This optional RTC battery connector (CN13) should be left unconnected if the utility port connector (CN5) has a battery connected.

## Fan Power, Switched (CN15)

The switched fan power connector (CN15) is an optional fan connector which allows the system to power the fan when the processor temperature reaches high temperatures.

To utilize this connector, refer to the *Thermal Management* section on page 57.

**Table 30 Fan Power, Switched (CN15)**

Pin	Signal	Function
1	CPU_FAN_PWM	+5 Volts DC, switched
2	GND	Ground
3	FAN_TACH	Fan Tachometer Input



## Chapter 4 Using the cpuModule

This chapter provides information for users who wish to develop their own applications programs for the CME34M cpuModule.

This chapter includes information on the following topics:

*The RTD Enhanced AMI BIOS* — page 44

*Memory Map* — page 46

*I/O Address Map* — page 47

*Hardware Interrupts* — page 48

*Advanced Digital I/O Ports (aDIO™)* — page 50

*Real Time Clock Control* — page 54

*Watchdog Timer Control* — page 56

*Thermal Management* — page 57

*Power Management* — page 58

*Multi-Color LED* — page 60

*Reset Status Register* — page 61

*Features and Settings That Can Affect Boot Time* — page 63

*System Recovery* — page 64

# The RTD Enhanced AMI BIOS

The RTD Enhanced AMI BIOS is software that interfaces hardware-specific features of the cpuModule to an operating system (OS). Physically, the BIOS software is stored in a Flash EPROM on the cpuModule. Functions of the BIOS are divided into two parts.

The first part of the BIOS is known as POST (power-on self-test) software, and it is active from the time power is applied until an OS boots (begins execution). POST software performs a series of hardware tests, sets up the machine as defined in Setup, and begins the boot of the OS.

The second part of the BIOS is known as the CORE BIOS. It is the normal interface between cpuModule hardware and the OS which is in control. It is active from the time the OS boots until the cpuModule is turned off. The CORE BIOS provides the system with a series of software interrupts to control various hardware devices.

## Configuring the RTD Enhanced AMI BIOS

The cpuModule Setup program allows you to customize the cpuModule's configuration. Selections made in Setup are stored on the board and are read by the BIOS at power-on.

## Entering the BIOS Setup

You can run Setup by rebooting the cpuModule and repeatedly pressing the **Delete** key. When you are finished with Setup, save your changes and exit. The system will automatically reboot.

## Field Selection

To move between fields in Setup, use the keys listed below.

**Table 31 Setup Keys**

Key	Function
→, ←, ↓, ↑	Move between fields
+, -, PgUp, PgDn	Selects next/previous values in fields
Enter	Go to the submenu for the field
Esc	To previous menu then to exit menu

## Main Menu Setup Fields

The following is a list of Main Menu Setup fields.

**Table 32 Main Menu Setup Fields**

Field	Active Keys	Selections
Main	Press <b>Enter</b> to select	Access system information such as BIOS version, EPLD version, and CMOS time and date settings
Advanced	Press <b>Enter</b> to select	Setup advanced cpuModule features
PCIPnP	Press <b>Enter</b> to select	Set PnP and PCI options and control system resources
Boot	Press <b>Enter</b> to select	Set the system boot sequence
Security	Press <b>Enter</b> to select	Setup the supervisor and user access passwords or enable boot sector virus protection
Power	Press <b>Enter</b> to select	Control power management settings, including power supply type, and system wake functions
Thermal	Press <b>Enter</b> to select	Monitor the cpuModule temperature, or activate thermal or fan modes.
Exit	Press <b>Enter</b> to select	Save or discard changes and exit the BIOS, or load the default BIOS settings



**Note** Future BIOS versions may have slightly different setup menus and options.

## Memory Map

Table 33 shows how memory in the first megabyte is allocated in the system.

**Table 33 First Megabyte Memory Map**

Address (hex)	Description
C0000–FFFFFh ROM	256 KB BIOS in Flash EPROM, shadowed into DRAM during runtime.
C0000–EFFFFh	Run time user memory space. Usually, memory between C0000h and CFFFFh is used for the BIOS of add-on VGA video cards.
A0000–BFFFFh	Normally used for video RAM as follows:  EGA/VGA            0A0000–0AFFFFh Monochrome       0B0000–0B7FFFh CGA                0B8000–0BFFFFh
00502–9FFFFh	DOS reserved memory area
00400–00501h	BIOS data area
00000–003FFh	Interrupt vector area

Memory beyond the first megabyte can be accessed in real mode by using EMS or a similar memory manager. See your OS or programming language references for information on memory managers.

## I/O Address Map

As with all standard PC/104 boards, the I/O total I/O space is 64k in size. However, because early processors only addressed 10 address lines (SA0–SA9), the first 1k is used for legacy I/O devices. Any ISA add-on modules you install must therefore use I/O addresses in the range of 0–1023 (decimal) or 000–3FF (hex). The upper I/O addresses are used for PCI I/O devices, and are automatically assigned by the BIOS or operating system at boot time.



**Note** If you add any PC/104 modules or other peripherals to the system you must ensure they do not use reserved addresses listed below, or malfunctions will occur. The exception to this is if the resource has been released by the user.

Table 34 lists I/O addresses reserved for the CME34M cpuModule.

**Table 34 I/O Addresses Reserved for the CME34M cpuModule**

Address Range (hex)	Bytes	Device
000–00Fh	16	DMA Controller
010–01Fh	16	Reserved for CPU
020–021h	2	Interrupt Controller 1
022–02Fh	13	Reserved
040–043h	4	Timer
060–064h	5	Keyboard Interface
070–071h	2	Real Time Clock Port
080–08Fh	16	DMA Page Register
0A0–0A1h	2	Interrupt Controller 2
0C0–0DFh	32	DMA Controller 2
0F0–0FFh	16	Math Coprocessor
100–101h	2	Video Initialization
1F0–1FFh	16	Hard Disk <sup>1</sup>
200–201h	2	Reserved
238–23Bh	4	Bus Mouse <sup>2</sup>
2E8–2EFh	8	Serial Port <sup>3</sup>
2F8–2FFh	8	Serial Port <sup>3</sup>
3E8–3EFh	8	Serial Port <sup>3</sup>
3F8–3FFh	8	Serial Port <sup>3</sup>
980–9BFh	64	Reserved
9C0–9C4h	5	aDIO <sup>4</sup>
9C5–9DFh	27	Reserved

1. If a floppy or IDE controller is not connected to the system, the I/O addresses listed will not be occupied.
2. If a PS/2 mouse is not connected to the system, the I/O addresses listed will not be occupied.
3. The I/O addresses for the serial port are selected in the BIOS Setup utility.
4. If aDIO is disabled, the I/O addresses listed will not be occupied.

# Hardware Interrupts



**Note** If you add any expansion modules or other peripherals to the system, you must ensure they do not use interrupts needed by the cpuModule, or malfunctions will occur.

The CME34M cpuModule supports the standard PC interrupts listed in Table 35. Interrupts not in use by hardware on the cpuModule itself are listed as available. Similarly, if the operating system is using APIC, more IRQs will be available.

**Table 35 Hardware Interrupts Used on the CME34M cpuModule**

Interrupt	Normal Use
0	Timer 0
1	Keyboard
2	Cascade of IRQ 8–15
3	COM2
4	COM1
5	Available
6	Available
7	Available
8	Real Time Clock
9	Available, routed to IRQ 2
10	Available
11	Available
12	Mouse
14 <sup>1</sup>	SATA hard disk
15 <sup>1</sup>	SATA Disk Chip socket

1. IRQs 14 and 15 may be available if the SATA controller is not configured in Compatibility Mode



**Note** The cpuModule has onboard PCI devices that will claim IRQ lines. In some instances, a PCI device will claim an IRQ line that is required by a legacy device. To reserve an IRQ for a legacy device, refer to the PnP/PCI Configuration Setup fields in the BIOS.

**Note** A device's hardware interrupt will be available for use if the given device is not present in the system and the device is disabled in Setup.



## Non-Standard Serial Port Modes

It is possible to change the input clock rate for the UARTs of the cpuModule by selecting the Serial Port Baud Rates option in the Serial Port Configuration menu of the BIOS Setup. Changing the option from **Normal** to **Non-Standard** will allow the serial port to operate at higher speeds.

This transforms bits [7:5] of the Divisor Latch High Byte of the UART into selections for alternate clock rates. The following table describes the bit operations and the resulting divide-by-one baud rate:

**Table 36 Divisor Latch High and Low Bytes**

Divisor Latch High Byte				Divisor Latch Low Byte	Baud Rate	% Error
Bit 7	Bit 6	Bit 5	Bits [4:0]			
0	0	0	0x00	0x01	115,200	0.16
1	0	0	0x00	0x01	460,800	0.16
1	1	0	0x00	0x01	921,600	0.16
0	0	1	0x00	0x01	1,500,000	0.16

To achieve non-standard baud rates, divide the baud rate you require by one of the non-standard divisors (460,800, 921,600, and 1,500,000). If the result is a whole number, substitute that value for the Divisor Latch Low Byte. For example, to achieve a baud rate of 750,000, select the Divisor Latch High Byte for 1,500,000 and set the Divisor Latch Low Byte to 2.



**Note** The signaling mode of the output will limit the highest baud rate achievable. For RS-232 mode the maximum suggested baud rate is 230,400. For 422/485 modes the maximum is 1,500,000.

**Note** When using the non-standard high speed serial port modes, it is highly recommended to use hardware flow control, whenever possible.

## Advanced Digital I/O Ports (aDIO™)

This board supports 12 bits of TTL/CMOS compatible digital I/O (TTL signaling). These I/O lines are grouped into two ports, Port 0 and Port 1. Port 0 is bit programmable; Port 1 is byte programmable. Port 0 supports RTD's Advanced Digital Interrupt modes. The three modes are strobe, match and event. Strobe mode generates an interrupt and latches Port 0 when the strobe input transitions from low to high. Match mode generates an interrupt when an 8-bit pattern is received in parallel that matches the match mask register. Event mode generates an interrupt when a change occurs on any bit. In any mode, masking can be used to monitor selected lines.

When the CPU boots, all digital I/O lines are programmed as inputs, meaning that the digital I/O line's initial state is undetermined. If the digital I/O lines must power up to a known state, an external 10 k $\Omega$  resistor must be added to pull the line high or low.

The 8-bit control read/write registers for the digital I/O lines are located from I/O address 9C0h to 9C4h. These registers are written to zero upon power up. From 9C0h to 9C4h, the name of these registers are **Port 0 data**, **Port 1 data**, **Multi-Function**, **DIO-Control**, and **Wake Control** register.



**Note** RTD provides drivers that support the aDIO interface on popular operating systems. RTD recommends using these drivers instead of accessing the registers directly.

### Digital I/O Register Set

**Table 37 Port 0 Data I/O Address 9C0h**

D7	D6	D5	D4	D3	D2	D1	D0
P0.7	P0.6	P0.5	P0.4	P0.3	P0.2	P0.1	P0.0

Port 0 Data register is a read/write bit direction programmable register. A particular bit can be set to input or output. A read of an input bit returns the value of port 0. A read of an output bit returns the last value written to Port 0. A write to an output bit sends that value to port 0.

**Table 38 Port 1 Data I/O Address 9C1h**

D7	D6	D5	D4	D3	D2	D1	D0
Reserved	Reserved	Reserved	Reserved	P1.3	P1.2	P1.1	P1.0

Port 1 Data register is a read/write byte direction programmable register. A read on this register when it is programmed to input will read the value at the aDIO connector. A write on this register when it is programmed as output will write the value to the aDIO connector. A read on this register when it is set to output will read the last value sent to the aDIO connector.

**Table 39 Multi-Function I/O Address 9C2h**

D7	D6	D5	D4	D3	D2	D1	D0
----	----	----	----	----	----	----	----

The multi-function register is a read/write register whose contents are set by the DIO-Control register. See the DIO-Control register description for a description of this register.

**Table 40 DIO-Control I/O Address 9C3h—Read Access**

D7	D6	D5	D4	D3	D2	D1	D0
Strobe 0 Status 0 = no strobe 1 = strobe		Strobe 1 Status 0 = no strobe 1 = strobe		Digital IRQ Mode 00 = Disabled 01 = strobe Mode 10 = event mode 11 = match mode		Port 1 Direction 0 = input 1 = output	
Digital IRQ Status 0 = no digital interrupt 1 = digital interrupt						Multi-Function Register Select 00 = clear mode 01 = port 0 direction 10 = mask register 11 = compare register	

**Table 41 DIO-Control I/O Address 9C3h—Write Access**

D7	D6	D5	D4	D3	D2	D1	D0
Reserved		Digital IRQ Mode 00 = Disabled 01 = strobe Mode 10 = event mode 11 = match mode		Port 1 Direction 0 = input 1 = output		Multi-Function Register Select 00 = clear mode 01 = port 0 direction 10 = mask register 11 = compare register	

**Table 42 Multi-Function at Address 9C2h<sup>1</sup>**

read/write	00 clear	X	X	X	X	X	X	X
0 in, 1 out	01 Port 0 direction	I/O	I/O	I/O	I/O	I/O	I/O	I/O
0 no mask, 1 mask	10 DIO mask	M7	M6	M5	M4	M3	M2	M1
read/write	11 compare	C7	C6	C5	C4	C3	C2	C1
								C0

1. Contents based on bits D0 and D1 of DIO-Control.

#### Clear Register:

A read to this register Clears the IRQs and a write to this register sets the DIO-Compare, DIO- Mask, DIO-Control, Port 1, and Port 0 to zeros. A write to this register is used to clear the board.

#### Port 0 Direction Register:

Writing a zero to a bit in this register makes the corresponding pin of the aDIO connector an input. Writing a one to a bit in this register makes the corresponding pin of the aDIO connector an output.

#### Mask Register:

Writing a zero to a bit in this register will not mask off the corresponding bit in the DIO-Compare register. Writing a one to a bit in this register masks off the corresponding bit in the DIO-Compare register. When all bits are masked off the aDIOs comparator is disabled. This condition means Event and Match mode will not generate an interrupt. This register is used by Event and Match modes.

#### Compare Register:

A Read/Write register used for Match Mode. Bit values in this register that are not masked off are compared against the value on Port 0. A Match or Event causes bit 6 of DIO-Control to be set and if the aDIO is in Advanced interrupt mode, the Match or Event causes an interrupt.

**Table 43 Wake Control I/O Address 9C4h**

D7	D6	D5	D4	D3	D2	D1	D0
Reserved						<b>Int Mask</b>	<b>Wake Enable</b>
						1 = Interrupt is masked 0=Interrupt is enabled	1=Interrupt triggers a Wake Event 0=Interrupt does not trigger a wake event.

Port 1 Data register is a read/write byte direction

## Interrupts

In order to use an interrupt with aDIO, the interrupt must first be selected in the BIOS setup utility under **Advanced, I/O Devices, aDIO Configuration, aDIO Interrupt**. The Digital I/O can use interrupts 3, 5, 6, 7, 10, 11, and 12. The interrupt must also be reserved so that it is not assigned to PCI devices. To reserve the interrupt, enter the BIOS under **PCIPnP** and change the interrupt you wish to use to “Reserved.” Then, select the appropriate interrupt mode in the DIO Control register. Also, verify that the Int Mask bit is cleared in the Wake Control register

## Advanced Digital Interrupts

There are three Advanced Digital Interrupt modes available. These three modes are Event, Match, and Strobe. The use of these three modes is to monitor state changes at the aDIO connector. Interrupts are enabled by writing to the **Digital IRQ Mode** field in the **DIO-Control** register.

### Event Mode

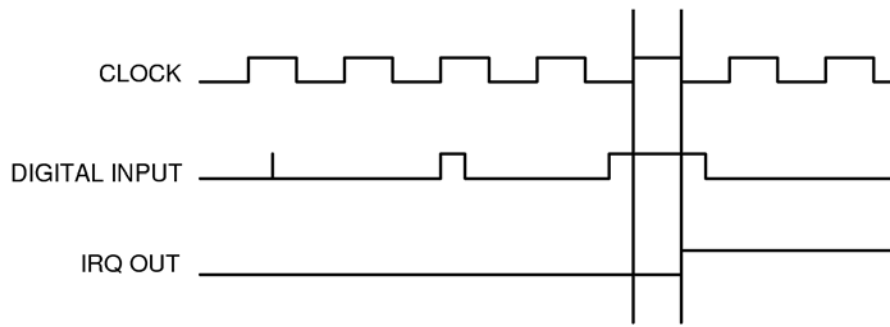
When this mode is enabled, Port 0 is latched into the DIO-Compare register at 8.33 MHz. The aDIO circuitry includes deglitching logic. The deglitching requires pulses on Port 0 to be at least 120 ns in width. As long as changes are present longer than that, the event is guaranteed to register. Pulses as small as 60 ns can register as an event, but they must occur between the rising and falling edge of the 8.33 MHz clock. To enter Event mode, set bits [4:3] of the DIO-Control register to “10”.

### Match Mode

When this mode is enabled, Port 0 is latched into the DIO-Compare register at 8.33 MHz. The aDIO circuitry includes deglitching logic. The deglitching requires pulses on Port 0 to be at least 120 ns in width. As long as changes are present longer than that, the match is guaranteed to register. Pulses as small as 60 ns can register as a match, but they must occur between the rising and falling edge of the 8.33 MHz clock. To enter Match mode, set bits [4:3] of the DIO-Control register to “11”.



**Note** Make sure bits [4:3] are set BEFORE writing the DIO-Compare register. If you do not set them first, the contents of the DIO-Compare register could be lost because the Event mode latches in Port 0 into the DIO-Compare register.



**Figure 6 aDIO Match Mode**

### Strobe Mode

Another interrupt mode supported by aDIO is Strobe mode. This allows the strobe pin of the DIO connector to trigger an interrupt. A low to high transition on the strobe pin will cause an interrupt request. The request will remain high until the Clear Register is read from. Additionally, the Compare Register latched in the value at Port 0 when the Strobe pin made a low to high transition. No further strobes will be available until a read of the Compare Register is made. You must read the Compare Register, and then clear interrupts so that the latched value in the compare register is not lost. To enter Strobe mode, set bits [4:3] of the DIO-Control register to "01".

### Wake-on-aDIO

The aDIO Strobe, Match and Event interrupt can be used to generate a wake event. This event can wake the CPU from any power-down mode, including Soft-Off (S5). Wake from aDIO will work as long as +5V Standby power is applied to the board. To use the aDIO to wake the system, Wake from aDIO must first be enabled in the BIOS setup utility. Then the aDIO is configured in the appropriate interrupt mode. The "Wake Enable" bit is then set in the Wake Control Register at 0x9C4. The CPU can then be placed in a standby mode, and the aDIO interrupt will wake the system.

During system standby, a 32kHz clock is used for the aDIO instead of an 8.33 MHz clock. Therefore, transitions must be at least 30 us in order to trigger a wake event.

If the aDIO is to be used for a wake event only, and not an interrupt, the "Int Mask" bit can be set in the Wake Control Register. This will block the interrupt, but still allow a wake event to occur. The various settings for "Wake Enable" and "Int Mask" are shown in Table 44 below.

**Table 44 Interrupt and Wake Event Generation**

WakeEnable	Int Mask	Function
0	0	Interrupt Only
0	1	No Interrupt or Wake event is generated
1	0	Interrupt and Wake Event
1	1	Wake Event Only

# Real Time Clock Control

## Overview

The cpuModule is equipped with a Real Time Clock (RTC) which provides system date and time functions. When the cpuModule is turned off, a battery must be attached to the utility connector to provide power to the RTC. Without power, the RTC will lose the date/time information when the system is turned off.

The RTC also provides an “alarm” function. This may be used to generate an interrupt at a particular time and day. This feature is commonly used to wake up the system from Sleep/Standby to run a scheduled task (defragment the hard drive, back up files, etc.).

In addition to the date/time/alarm functions, the RTC contains several bytes of battery-backed RAM, commonly called CMOS memory. In a typical desktop PC, the CMOS memory is used by the BIOS to store user settings. This RTD cpuModule uses onboard flash to store user BIOS settings. To preserve compatibility with traditional PCs, the RTD Enhanced BIOS also mirrors the user settings from flash in CMOS. Therefore, the contents of CMOS may be overwritten at boot time, and should be treated as “read only”.

## Accessing the RTC Registers

You may access the RTC date/time and CMOS memory using the Index and Data Registers located at I/O addresses 70h and 71h.

- Address 70h is the Index register. It must be written with the number of the register to read or write. Valid values are 00h to 7Fh.
- Address 71h is the Data register. It contains the contents of the register pointed to by the Index.

To read/write an RTC register, you must first set the Index register with the register number, and then read/write the Data register.

A list of key RTC registers is shown in Table 45 below:

**Table 45 Real Time Clock Registers**

Registers (hex)	Registers (decimal)	Function
00h	0	RTC Seconds
02h	2	RTC Minutes
04h	4	RTC Hours
06h	6	RTC Day of Week
07h	7	RTC Day of Month
08h	8	RTC Month
09h	9	RTC Year
0Ah	10	RTC Status Register A <ul style="list-style-type: none"><li>• <b>Bit 7:</b> RTC Update In Progress (Read Only) - RTC registers should not be accessed when this bit is high.</li><li>• <b>Bits 6-4:</b> Divider for 32.768 KHz input (should always be 010)</li><li>• <b>Bits 3-0:</b> Rate select for periodic interrupt.</li></ul>

**Table 45 Real Time Clock Registers**

Registers (hex)	Registers (decimal)	Function
0Bh	11	<p>RTC Status Register B</p> <ul style="list-style-type: none"> <li>• <b>Bit 7:</b> Inhibit Update - When high, the RTC is prevented from updating.</li> <li>• <b>Bit 6:</b> Periodic Interrupt Enable - When high, the RTC IRQ will be asserted by the periodic interrupt.</li> <li>• <b>Bit 5:</b> Alarm Interrupt Enable - When high, the RTC IRQ will be asserted when the current time matches the alarm time.</li> <li>• <b>Bit 4:</b> Update Ended Interrupt Enable - When high, the RTC IRQ will be asserted every time the RTC updates (once per second).</li> <li>• <b>Bit 3:</b> Square Wave Enable - Not used.</li> <li>• <b>Bit 2:</b> Data Mode - Sets the data format of the RTC clock/calendar registers (0=BCD, 1=binary). This is typically set to BCD mode.</li> <li>• <b>Bit 1:</b> Hours Byte Format - Sets the hour byte to 12 or 24 hour time (0=12 hour, 1=24 hour). This is typically set to 24 hour mode.</li> <li>• <b>Bit 0:</b> Daylight Savings Enable - When high, the RTC will automatically update itself for Daylight Savings Time. It is recommended to leave this bit low and let the operating system manage time zones and DST.</li> </ul>
0Ch	12	<p>RTC Status Register C (Read Only)</p> <ul style="list-style-type: none"> <li>• <b>Bit 7:</b> IRQ Flag - Indicates that the Real Time Clock IRQ is asserted. Goes high whenever one of the enabled interrupt conditions in Register B occurs.</li> <li>• <b>Bit 6:</b> Periodic Flag</li> <li>• <b>Bit 5:</b> Alarm Flag</li> <li>• <b>Bit 4:</b> Update Ended Flag</li> <li>• <b>Bit 3-0:</b> Reserved</li> </ul> <p>Reading this register will also clear any of set flag (IRQ, Periodic, Alarm, Update Ended). Note that even if the interrupt source is not enabled in Register B, the flags in Register C bits 4, 5, and 6 may still be set.</p>
0Dh	13	<p>RTC Status Register D</p> <ul style="list-style-type: none"> <li>• <b>Bit 7:</b> Valid Time/Date (always reads 1)</li> <li>• <b>Bit 6:</b> Reserved</li> <li>• <b>Bits 5-0:</b> RTC Alarm Day of the Month</li> </ul>



**Note** RTC registers that are not listed above are used by the BIOS and should be considered “Reserved”. Altering the contents of any unlisted RTC register may interfere with the operation of your cpuModule. The specific uses of the unlisted RTC registers will depend on the BIOS version loaded on the cpuModule. Contact RTD’s technical support for more information.

## Watchdog Timer Control

The cpuModule includes a Watchdog Timer, which provides protection against programs “hanging”, or getting stuck in an execution loop where they cannot respond correctly. The watchdog timer consists of a counter, a reset generator, and an interrupt generator. When the counter reaches the interrupt time-out, it can generate an interrupt. When the counter reaches the reset time-out, the system is reset. The counter is “refreshed,” or set back to zero by reading from a specific register. The watchdog can also be put into an “inactive” state, in which no resets or interrupts are generated.

The ability to generate an interrupt allows the application to gracefully recover from a bad state. For example, consider a system that has a reset time-out of 2 seconds, interrupt time-out of 1 second, and the watchdog timer is refreshed every 0.5 seconds. If something goes wrong, an interrupt is generated. The Interrupt service routine then attempts to restart the application software. If it is successful, the application is restarted in much less time than a full reboot would require. If it is not successful, the system is rebooted.

Due to system latency, it is recommended that the Watchdog be refreshed at about half of the reset time-out period, or half of the interrupt time-out period, whichever is applicable.

### Register Description

The Advanced Watchdog Timer has a Setup Register and a Runtime Register. The Setup Register is set by the BIOS, and can be adjusted by entering the BIOS Setup Utility, and going to “Advanced/Miscellaneous RTD Features”. The Setup Register may also be read by the driver to determine if the Watchdog is enabled, and the interrupt and base address that it is using.



**Note** Enabling the watchdog timer in the BIOS does not actually arm it. The watchdog timer can be armed by accessing I/O address 985h, as explained below.

**Table 46 Advanced Watchdog Setup Register 98Bh**

D7	D6	D5	D4	D3	D2	D1	D0
Reserved				<b>WDT_IRQ</b>		<b>Reg_Enable</b>	
				Select Interrupt for WDT		0=Watchdog timer is disabled and	
				000=Disabled		Runtime Register will not appear	
				001 = IRQ5		in I/O map	
				010 = IRQ7		1=Watchdog Timer is enabled.	
				011 = IRQ10		Runtime Register will appear in	
				100 = IRQ11		I/O map	
				101 = IRQ12			
				110 = Reserved			
				111 = Reserved			

**Table 47 Advanced Watchdog Runtime Register 985h**

D7	D6	D5	D4	D3	D2	D1	D0
<b>WDT_Active</b>	<b>WDT_IRQ_Ena</b>	Reserved		<b>WDT_IRQ_Time</b>	<b>WDT_RST_Time</b>		
0=Watchdog timer is disabled.	0=Watchdog interrupt is disabled.			Select Interrupt time for WDT	Select Reset time for WDT		
1=Watchdog is armed and can generate resets and interrupts.	1=Watchdog interrupt is enabled.			00=0.25s	00=2.00s		
				01 = 0.50s	01 = 0.50s		
				10 = 0.75s	10 = 0.75s		
				11 = 1.00s	11 = 1.00s		

Reading the Runtime Register also refreshed the watchdog timer.



# Thermal Management

The cpuModule has several thermal features which can be used to monitor and control the board's temperature when extreme operating conditions are prevalent.

## Thermal Monitor

The Intel® Thermal Monitor is a feature on the CME34M that automatically throttles the CPU when the CPU exceeds its thermal limit. The maximum temperature of the processor is defined as the temperature that the Thermal Monitor is activated. The thermal limit and duty cycle of the Thermal Monitor cannot be modified.



**Note** The CPU and PCB temperatures displayed in the BIOS are approximate and should not be used to validate a cooling solution.

---

## Fan Mode

The CPU fan can be controlled by the CPU when connected to the switched fan power connector (**CN15**). Three fan modes are supported, which can be toggled in the BIOS setup. When the fan is not always on, the CPU's power consumption is reduced, and the life of the fan is increased.

- **Always On:** When in this mode, the fan is always powered by the CPU.
- **On At 70C:** This mode allows the system to keep the fan turned off until the CPU reaches 70C. In this mode, the fan will slowly transition between on and off to prevent oscillations. This is the best mode for applications that will spend most of the time below 60C.
- **Variable:** The fan will spin slowly until the CPU reaches 60C, and then will increase speed. Maximum speed is reached when the CPU reaches 75C.

## Further Temperature Reduction

The cpuModule's temperature is directly related to power consumption. Reducing the power consumption of the CPU will have an effect on the CPU's temperature. Suggested methods for reducing the CPU's power consumption can be found in the *Power Management* section on page 58.

## Power Management

The CME34M cpuModule supports various powering mechanisms which allow the cpuModule to monitor power consumption and temperature, and achieve minimal power consumption states. These unique features include Enhanced Intel® SpeedStep® Technology (Core 2 Duo only), thermal monitoring and thermal throttling, as well as low power modes including ACPI configurations. Various wake options are also available to resume normal system power.

### Enabling Enhanced Intel SpeedStep Technology (Core 2 Duo)

When enabled, Enhanced Intel® SpeedStep® Technology can give application software greater control over the processor's operating frequency and input voltage. This allows the system to easily manage power consumption dynamically. This feature can be enabled or disabled in the BIOS. When enabled, the feature can be set to several different modes, which are described below.

- **Disabled:** The processor speed is set to its maximum operating frequency.
- **Enabled:** The processor speed is controlled by the operating system.

### Advanced Configuration and Power Interface (ACPI)

The cpuModule supports several different ACPI low power modes, including the S1, S3, S4, and S5 sleeping states. The BIOS setup utility provides an option to select between S1 and S3 as the Standby state. Sleep modes S4 and S5 are setup by the operating system.

The cpuModule's ACPI suspend modes are described below

- **S1 (Power on Suspend):** The S1 low power state consumes the most power of all supported ACPI sleep modes. In this mode, the CPU stops executing instructions, but power to the CPU and RAM is maintained.
- **S3 (Suspend to RAM):** Everything in the system is powered off except for the system memory. When the system wakes from this mode, operating systems allow applications to resume where they left off, as the state of the application is preserved in memory.
- **S4 (Hibernate):** When the system enters this state, the operating system will save the current state of applications and relevant data to disk, thus allowing the system RAM to be powered down.
- **S5 (Soft-Off):** The system is in a soft off state, and must be rebooted when it wakes.

### Power Button Modes

The soft power button input of the utility port connector (**CN5**) can be configured by the operating system as a suspend button (transition to S1 or S3) or as soft power button (transition to S5). Consult your operating system documentation for information on how to configure it. The power button will always cause a transition to S5 if pressed for 4 seconds or longer, without interaction from the operating system.

### Low-Power Wake Options

The cpuModule supports several methods of waking from a low power state. Several of these wake options are BIOS configurable, and can be accessed directly from the "Power" menu in the BIOS setup:

- **Resume on aDIO:** This option allows the system to use an aDIO Strobe, Match, or Event interrupt to generate a wake event. This event can wake the CPU from any power-down mode, including Soft-Off (S5). For more information, refer to the section titled *Wake-on-aDIO* on page 53.
- **Resume on PME#:** When enabled, the system can wake when a signal is applied to the PME# signal on the PCI bus, or the WAKE# signal on the PCIe bus. This includes wake-up on onboard LAN controller.

- **Resume on RTC Alarm:** The RTC Alarm allows the system to turn on at a certain time every day.

## AT vs. ATX Power Supplies

Both AT and ATX power supplies may be used with the CME34M cpuModule, however AT power supplies do not provide any standby power to the cpuModule. When an AT power supply is used to power the system, low power modes that require a standby power to wake the system will not be fully supported.

ATX power supplies do provide a standby power, thus allowing the system to utilize all low power modes supported by the hardware. When an ATX supply is used to power the cpuModule, lower power modes can be achieved. During these low power modes, the standby power from the ATX power supply provides power to a small circuit on the CPU, which is used to watch for a system wake event.

## ATX Power Supply Signals

The auxiliary power connector (**CN3**) provides two ATX style signals, +5V Standby and PSON#. The +5V Standby rail is used to power certain parts of the cpuModule when the main power supply is turned off, i.e. during Suspend-to-RAM (S3), Hibernate (S4), or Soft-Off (S5) power modes. The PSON# signal is an active low open-drain output that signals the power supply to turn on. Use of these signals allows the power consumption to drop to below 1W during standby modes, and still enable any of the wake events.

## Reducing Power Consumption

In addition to the CPU's low power modes, power consumption can further be reduced by making some modifications to the BIOS setup. When the following features are modified, the CPU's power consumption will decrease:

- **CPU Speed:** Setting the processor to its minimum speed in the BIOS will reduce power consumption
- **Memory Speed:** Changing the DDR DRAM clock frequency will reduce power consumption, however memory performance will also be reduced.
- **Ethernet:** Can be disabled in the BIOS
- **Serial Ports:** Can be disabled in the BIOS
- **Fan Mode:** Set the fan to auto mode so it is used only when the processor reaches high temperatures. This option will only effect the fan if it is connected to the switched fan power connector (**CN15**).
- **Multi-Color LED:** Can be disabled in the BIOS

## Multi-Color LED

The CME34M has a Multi-Color LED which can be enabled or disabled in the BIOS setup screen. The color of the LED indicates the status of the board, as shown in Table 48.

**Table 48 LED Colors**

Color	Description
Green	Normal Operation
Blue	SATA Activity
Red	cpuModule is in reset <sup>1</sup>
Yellow (Red + Green)	cpuModule is in Standby
White (R+G+B)	cpuModule is approaching thermal limit <sup>2</sup>
Cyan (Blue + Green)	Ethernet Link at 100 Mbps or Bus Stacking Error
Magenta (Blue + Red)	Ethernet Link at 1000 Mbps
Blink	Ethernet Activity

1. If power is applied to the cpuModule while jumper **JPS** is installed, the LED will be red. This does not indicate that the board is in reset
2. The LED will remain White until the system is shut down.

The LED can also be controlled manually by writing to I/O Port 984h, as shown in Table 49 and Table 50

**Table 49 Multi-Color LED I/O Address 984h**

D7	D6	D5	D4	D3	D2	D1	D0
Reserved	Reserved	Reserved	Reserved	Reserved	Multi-Color LED		

The following table lists the color displayed and the value written.

**Table 50 Manual LED Colors**

I/O Port 984h Value	Color
0x00	Automatic (see Table 48)
0x08	Off (will reduce system power consumption.)
0x09	Blue
0x0A	Green
0x0B	Cyan (Green + Blue)
0x0C	Red
0x0D	Magenta (Red + Blue)
0x0E	Yellow (Red + Green)
0x0F	White (Red + Green + Blue)

## Reset Status Register

The cpuModule has several different signals on board which can cause a system reset. If a reset occurs, the reset status register can be used to see which reset or resets have been asserted on the cpuModule.

The user has the ability to see which resets have been asserted. Resets can also be cleared.

- **Examine Resets:** Reading from I/O port 0x987 will indicate if a reset has been asserted. If a 1 is read, the corresponding reset has been asserted. If a 0 is read from the bit, the reset has not been asserted
- **Clear Reset:** Each reset can be cleared by writing a 1 to the selected bit of I/O port 0x987.

**Table 51 Reset Status I/O Address 987h - Read Access**

D7	D6	D5	D4	D3	D2	D1	D0
Utility Reset 1 = reset asserted 0 = no reset		System Power Good 1 = reset asserted 0 = no reset		Main +5V Input 1 = reset asserted 0 = no reset		Memory Power 1 = reset asserted 0 = no reset	
	CPU Core Power 1 = reset asserted 0 = no reset		SIO Power Good 1 = reset asserted 0 = no reset		Management Power 1 = reset asserted 0 = no reset		Standby Power 1 = reset asserted 0 = no reset

**Table 52 Reset Status I/O Address 987h - Write Access**

D7	D6	D5	D4	D3	D2	D1	D0
Utility Reset 1 = clear reset		System Power Good 1 = clear reset		Main +5V Input 1 = clear reset		Memory Power 1 = clear reset	
	CPU Core Power 1 = clear reset		SIO Power Good 1 = clear reset		Management Power 1 = clear reset		Standby Power 1 = clear reset

**Table 53 Reset Status Description and Priorities**

I/O Address 457h	Reset Signal	Reset Priority <sup>1</sup>	Description
D7	Utility Reset	-	Utility connector push button reset <sup>2</sup>
D6	CPU Core Power	5	CPU core powers supply
D5	System Power	4	Power supplies that are not for standby power
D4	SIO Power	3	Power monitored by the Super I/O.
D3	Main Power (+5V)	2	Main input power to cpuModule (+5V)
D2	Management Power	2	Power used in management mode.
D1	Memory Power	2	Power to onboard memory banks
D0	Standby Power	1	Standby power supplies

1. When a reset is asserted, all resets with a higher reset priority will also be asserted. For example, if the standby power reset is asserted, all other resets will also be asserted.
2. The BIOS allows the user to change the function of the utility connector's push button reset. Even if the push button is not configured as a reset, this bit will always read a 1(asserted) when the reset button has been pushed.

## Features and Settings That Can Affect Boot Time

The boot time of a system is dependent upon numerous system settings as well as devices attached to a system. This section addresses some devices and settings that can increase or decrease a system's boot time.

### Quick Boot

The BIOS contains a Quick Boot option that minimizes the boot time of the system. Quick Boot eliminates the exhaustive tests that are performed during Power On Self Test (POST) while maintaining the functionality of the board. By enabling the Quick Boot feature, your system can achieve 5-second boot times.

### Add-On Cards With BIOS Extensions

Some add-on cards have an integrated BIOS extension. The most common examples are SCSI controllers and network cards with boot ROMs. During POST, the BIOS executes the card's extension code. This extension code is third-party code, which is beyond RTD's control. The BIOS extension will most likely increase the boot time. Exactly how much it increases boot time will depend on the particular card and firmware version.

### VGA Controller

VGA controllers have a VGA BIOS that must be initialized during POST. It can take some time to initialize the VGA BIOS. Exactly how long will depend on the particular VGA controller and BIOS version.

### Hard Drive Type

During Hard Drive initialization, each device must be probed. Some devices take longer to probe. 2.5-inch hard drives tend to take longer than 3.5-inch ones, because they spin at a lower RPM.

### Monitor Type

Some monitors take a while to power on. Desktop flat panels are especially slow. This does not affect the actual boot time of the CPU. However, the CPU may boot before the monitor powers on.

### NVRAM Updates

System configuration data is stored in the onboard NVRAM. When the system configuration changes, this information must be updated. If an update is necessary, it will happen at the end of POST (the BIOS will display an "Updating NVRAM..." message). The NVRAM update takes a few seconds and increases the boot time. Once the NVRAM is updated, boot times will return to normal.

NVRAM updates only happen when the system configuration changes. They do not happen spuriously. They are usually triggered by adding or removing a PCI device from a stack. Updates can also be triggered by altering the Plug-n-Play configuration of the BIOS.

### Boot Device Order

The BIOS contains a list of devices to try booting from. If you wish to boot to a particular device (for example, a hard drive), make sure that it is first in the boot order. This will speed up boot times.

# System Recovery

## Reset Button Recovery

The CME34M provides several methods for recovering from an incorrectly configured system. In order to enter the recovery mode, follow the steps below:

1. Remove power from the system, including standby power.
2. Press and hold the reset button attached to the Utility Connector.
3. Apply power to the system while continuing to hold the reset button.
4. Wait the amount of time shown in Table 54 for the desired recovery mode.
5. Release the reset button, allowing the system to boot.

**Table 54 Reset Button Recovery Modes**

Hold Time	Mode
0-4 seconds	No recovery mode. System will stay in reset while button is pressed.
4-8 seconds	Load Default BIOS Settings
8-12 seconds	Serial POST Code Output
> 12 seconds	BIOS Boot Block Recovery

## Load Default BIOS Settings

Loading BIOS defaults allows recovery from an incorrectly configured display device, incorrect boot options, and many other incorrect settings. It is also a good starting point when making BIOS changes. After restoring defaults, the BIOS settings should be reviewed and modified as needed.

The default BIOS can be restored either by using Reset Button Recovery, or the “Load Defaults” option in the BIOS.

## Serial Power On Self Test POST Code Output

The POST Codes represents a series of events that take place in a system during the Power On Self Test. If the POST fails the system will not boot as expected. Knowing which POST code the failure occurred may help system debug.

This recovery mode configures serial port connector **CN7** as dual RS-232, and sends the POST codes on the second port (i.e. pin 7 is the transmit pin). The port settings are 115kbps, 8 bits, no parity, one stop bit. When using this recovery mode, the POST codes can be logged on another computer running terminal software. Contact RTD technical support for more details.

## BIOS Boot Block Recovery

This recovery mode allows you to re-load a BIOS that has been corrupted. The BIOS can be loaded from a file on a USB key or other removable drive. In order for this to work, the boot block of the BIOS must still be intact. Contact RTD tech support for more details.





## Appendix A    Hardware Reference

This appendix provides information on CME34M cpuModule hardware, including:

*Jumper Settings and Locations* — page 66

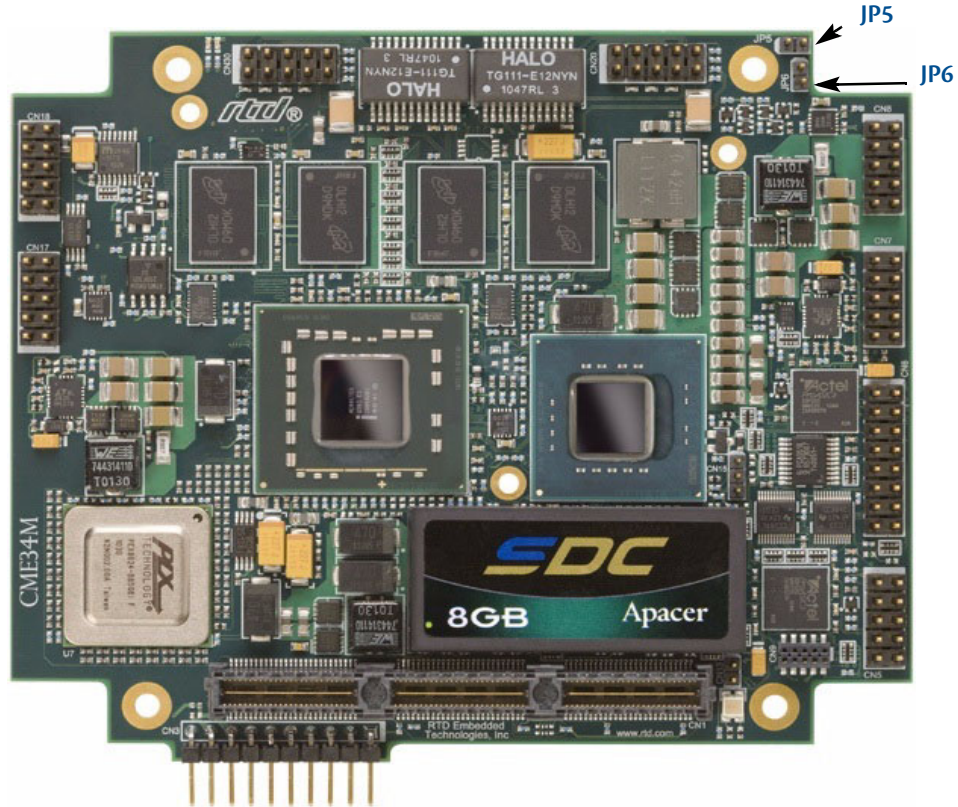
*Onboard PCI/PCIe Devices* — page 67

*Physical Dimensions* — page 68

## Jumper Settings and Locations

Many cpuModule options are configured by positioning jumpers. Jumpers are labeled on the board as **JP** followed by a number.

Figure 7 shows the jumper locations that are used to configure the cpuModule. Table 55 lists the jumpers and their settings.



**Figure 7 CME34M Jumper Locations (top side)**

**Table 55 CME34M Jumpers**

Jumper	Pins	Function	Default
<b>JP5</b>	2	Reserved	open
<b>JP6</b>	2	Used to disable the Bus Stacking Error detection. See <i>PCIe/104 Type 2 Compatibility</i> on page 40. <b>pins 1–2:</b> Disable Bus Stacking Error detection <b>open:</b> Enable Bus Stacking Error detection (normal operation)	open

## Onboard PCI/PCIe Devices

The CME34M cpuModule has several onboard PCI/PCIe devices, all of which are listed in the table below. This table shows a typical configuration, and the actual devices may change based on BIOS settings.

**Table 56 Onboard PCI Devices**

Device ID	Vendor ID	Description
2A40	8086	Host Bridge
2A41	8086	PCI-to-PCI Bridge (PCIe x16)
2A42	8086	Primary Display Controller
2A43	8086	Secondary Display Controller
10F5	8086	Ethernet Controller (CN20)
2937	8086	USB UHCI #4
2938	8086	USB UHCI #5
2939	8086	USB UHCI #6
293C	8086	USB EHCI #2
2940	8086	PCI-to-PCI Bridge (PCIe/104 x1 #1)
2942	8086	PCI-to-PCI Bridge (PCIe/104 x1 #2)
2944	8086	PCI-to-PCI Bridge (PCIe/104 x1 #3)
2946	8086	PCI-to-PCI Bridge (PCIe/104 x1 #4)
2948	8086	PCI-to-PCI Bridge to Shared Links
2934	8086	USB UHCI #1
2935	8086	USB UHCI #2
2936	8086	USB UHCI #3
293A	8086	USB EHCI #1
2917	8086	LPC Bridge
2928	8086	SATA Controller
2930	8086	SMBus Controller
292D	8086	SATA Controller
8509	10B5	PCI-to-PCI Bridge (Shared Link x1s)
10D3	8086	Ethernet Controller (CN30)
8624	10B5	PCI-to-PCI Bridge (x4s)

## Physical Dimensions

Figure 8 shows the mechanical dimensions of the CME34M cpuModule.

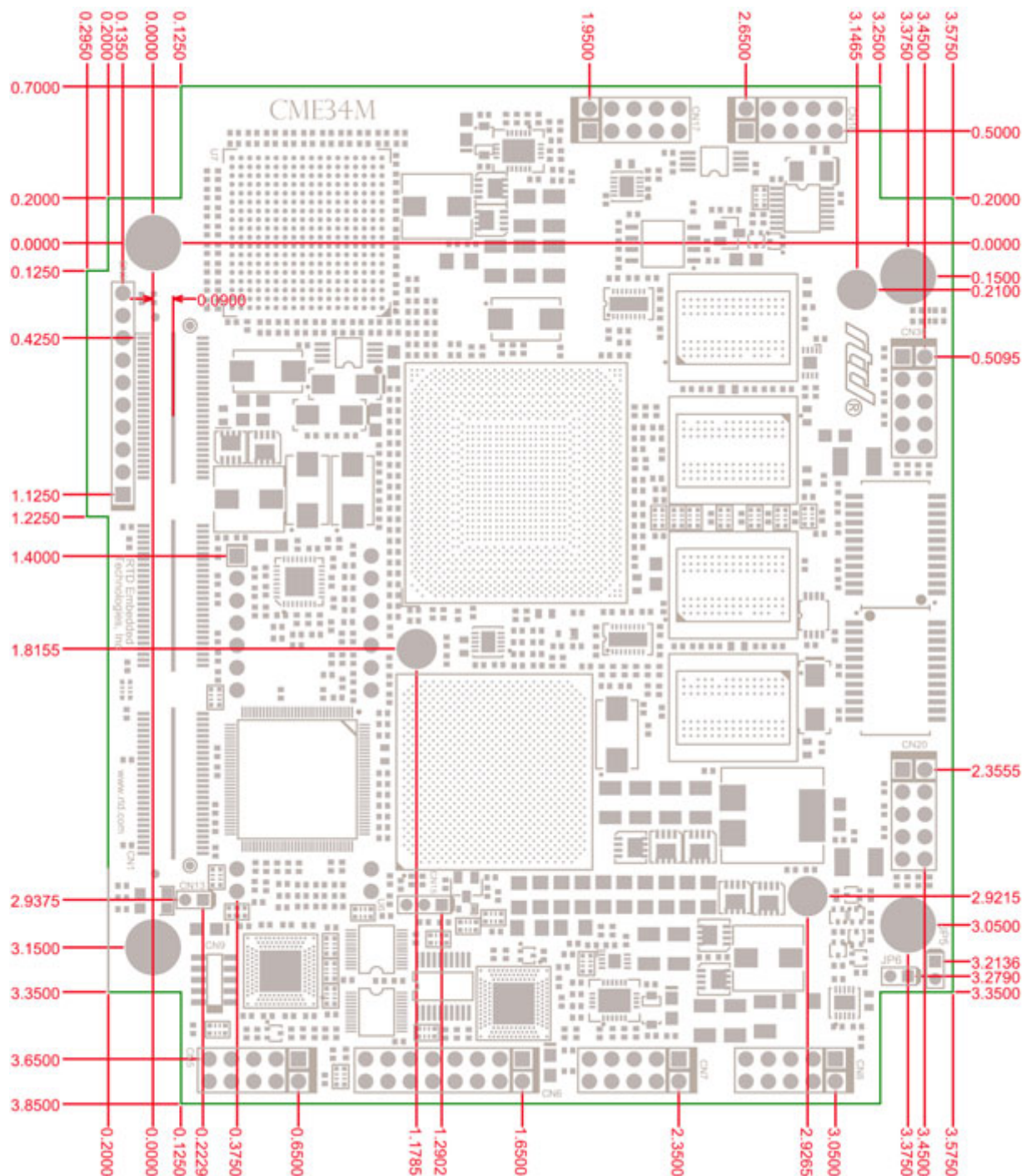


Figure 8 CME34M Physical Dimensions ( $\pm 0.005$  inches)

## Board Spacing

In order to facilitate larger heatsink solutions, the CME34M is designed to use a 22mm standoff between it and the board above it. The PCIe/104 connector on the top is specially designed to accommodate the 22mm board spacing when mated with a standard connector.

When attaching a board below the CME34M, the standard 0.600" board spacing is used.





## Appendix B    Troubleshooting

Many problems you may encounter with operation of your CME34M cpuModule are due to common errors. This appendix includes the following sections to help you get your system operating properly.

*Common Problems and Solutions* — page 72

*Troubleshooting a PC/104 System* — page 73

*How to Obtain Technical Support* — page 74



## Common Problems and Solutions

Table 57 lists some of the common problems you may encounter while using your CME34M cpuModule, and suggests possible solutions.

If you are having problems with your cpuModule, review this table before contacting RTD Technical Support.

**Table 57 Troubleshooting**

Problem	Cause	Solution
cpuModule "will not boot"	no power or wrong polarity	<ul style="list-style-type: none"> <li>check for correct power on the PC/104-Plus (PCI) bus connector</li> </ul>
	incorrect Setup	<ul style="list-style-type: none"> <li>reboot and press <b>Delete</b> to run Setup</li> </ul>
	defective or misconnected device on bus	<ul style="list-style-type: none"> <li>check for misaligned bus connectors</li> <li>remove other cards from stack</li> </ul>
	incorrect PCIe/104 cards installed (LED is Cyan)	<ul style="list-style-type: none"> <li>See <i>PCIe/104 Type 2 Compatibility</i> on page 40.</li> </ul>
	cable connected backwards	<ul style="list-style-type: none"> <li>verify all cables are connected correctly</li> </ul>
cpuModule keeps rebooting	problem with power supply	<ul style="list-style-type: none"> <li>check for correct power on the PC/104-Plus (PCI) bus connector</li> </ul>
	reset switch is on	<ul style="list-style-type: none"> <li>check that the reset button is not pushed in</li> </ul>
	watchdog timer is not being serviced quickly enough	<ul style="list-style-type: none"> <li>verify that the watchdog timer is being refreshed before it times out</li> </ul>
cpuModule will not boot from particular drive or device	device not bootable	<ul style="list-style-type: none"> <li>use sys command on drive or reformat the device using the <b>/s</b> switch</li> </ul>
	device not formatted	<ul style="list-style-type: none"> <li>format drive using <b>/s</b> switch</li> </ul>
	power not connected to boot drive	<ul style="list-style-type: none"> <li>connect power cable to floppy or hard drive</li> </ul>
erratic operation	excessive bus loading	<ul style="list-style-type: none"> <li>reduce number of modules in stack</li> <li>remove termination components from bus signals</li> <li>remove any power supply bus terminations</li> </ul>
	power supply noise	<ul style="list-style-type: none"> <li>examine power supply output with oscilloscope</li> <li>glitches below 4.75 VDC will trigger a reset</li> <li>add bypass caps</li> </ul>
	power supply limiting	<ul style="list-style-type: none"> <li>examine power supply output with oscilloscope</li> <li>check for voltage drop below 4.75 VDC when hard drive or floppy drive starts</li> <li>add bypass caps</li> </ul>
	insufficient cabling through power connector	<ul style="list-style-type: none"> <li>increase wire gauge to connector</li> <li>power through bus connectors</li> </ul>
	temperature too high	<ul style="list-style-type: none"> <li>add fan, processor heatsink, or other cooling device(s)</li> <li>See <i>Thermal Management</i> on page 57</li> </ul>
	memory address conflict	<ul style="list-style-type: none"> <li>check for two hardware devices (e.g. Ethernet, SSD, Arcnet, PCMCIA) trying to use the same memory address</li> <li>check for two software devices (e.g. EMM386, PCMCIA drivers, etc.) trying to use the same memory addresses</li> <li>check for hardware and software devices trying to use the same memory address</li> <li>check for an address range shadowed (see Advanced Setup screen) while in use by another hardware or software device</li> </ul>
	I/O address conflict	<ul style="list-style-type: none"> <li>check for another module trying to use I/O addresses reserved for the cpuModule between 010h and 01Fh</li> <li>check for two modules (e.g. dataModules, PCMCIA cards, Ethernet) trying to use the same I/O addresses</li> </ul>



**Table 57 Troubleshooting (cont'd)**

Problem	Cause	Solution
keyboard does not work	keyboard interface damaged by misconnection	<ul style="list-style-type: none"> <li>check if keyboard LEDs light</li> </ul>
	wrong keyboard type	<ul style="list-style-type: none"> <li>verify keyboard is an "AT" type or switch to "AT" mode</li> </ul>
floppy drive light always on	cable misconnected	<ul style="list-style-type: none"> <li>check for floppy drive cable connected backwards</li> </ul>
two hard drives will not work, but one does	both drives configured for master	<ul style="list-style-type: none"> <li>set one drive for master and the other for slave operation (consult drive documentation)</li> </ul>
floppy does not work	"data error" due to drive upside down	<ul style="list-style-type: none"> <li>orient drive properly (upright or on side)</li> </ul>
will not boot when video card is removed	illegal calls to video controller	<ul style="list-style-type: none"> <li>look for software trying to access nonexistent video controller for video, sound, or beep commands</li> </ul>
abnormal video	flat panel is enabled	<ul style="list-style-type: none"> <li>disable the flat panel in the BIOS</li> </ul>
can only use 640 x 480 resolution in Windows	flat panel is enabled	<ul style="list-style-type: none"> <li>disable the flat panel in the BIOS</li> </ul>
	video drivers not installed	<ul style="list-style-type: none"> <li>install the video drivers</li> </ul>
will not boot from PCMCIA hard drive	booting from PCMCIA is not supported	<ul style="list-style-type: none"> <li>boot from SSD, use autoexec.bat to load PCMCIA drivers, run application from PCMCIA card</li> </ul>
COM port will not work in RS-422 or RS-485 modes	not configured for RS-422/485	<ul style="list-style-type: none"> <li>correctly configure serial port in Setup program</li> </ul>
COM port will not transmit in RS-422 or RS-485 mode	not enabling transmitters	<ul style="list-style-type: none"> <li>control RTS* bit of Modem Control Register to enable transmitters; see Serial Port descriptions</li> </ul>
date and time not saved when power is off	no backup battery	<ul style="list-style-type: none"> <li>connect a backup battery to the multi-function connector</li> </ul>

## Troubleshooting a PC/104 System

If you have reviewed the preceding table and still cannot isolate the problem with your CME34M cpuModule, please try the following troubleshooting steps. Even if the resulting information does not help you find the problem, it will be very helpful if you need to contact technical support.

1. **Simplify the system.** Remove items one at a time and see if one particular item seems to cause the problem.
2. **Swap components.** Try replacing items in the system one-at-a-time with similar items.

## How to Obtain Technical Support

If after following the above steps, you still cannot resolve a problem with your CME34M cpuModule, please gather the following information:

- cpuModule model, BIOS version, and serial number
- List of all boards in system
- List of settings from cpuModule Setup program
- Printout of autoexec.bat and config.sys files (if applicable)
- Description of problem
- Circumstances under which problem occurs

Then contact RTD Technical Support:

Phone: 814-234-8087

Fax: 814-234-5218

E-mail: [techsupport@rtd.com](mailto:techsupport@rtd.com)

## Appendix C IDAN™ Dimensions and Pinout

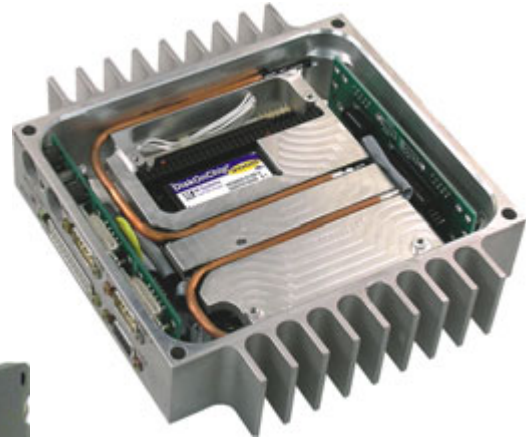
cpuModules, like all other RTD PC/PCI-104 modules, can be packaged in Intelligent Data Acquisition Node (IDAN) frames, which are milled aluminum frames with integrated heat sinks and heat pipes for fanless operation. RTD modules installed in IDAN frames are called building blocks. IDAN building blocks maintain the simple but rugged stacking concept of PC/104 and PC/104-Plus. Each RTD module is mounted in its own IDAN frame and all I/O connections are brought to the walls of each frame using standard PC connectors. No connections are made from module to module internal to the system other than through the PC/104 bus, enabling quick interchangeability and system expansion without hours of rewiring and board redesign.

The CME34M cpuModule can also be purchased as part of a custom-built RTD HiDAN™ or HiDANplus™ High Reliability Intelligent Data Acquisition Node. This appendix provides the dimensions and pinouts of the CME34M installed in an IDAN frame. Contact RTD for more information on high reliability IDAN, HiDAN, and HiDANplus PC/PCI-104 systems.



**IDAN**—Adhering to the PC/104 stacking concept, IDAN allows you to build a customized system with any combination of RTD modules.

**IDAN Heat Pipes**—Advanced heat pipe technology maximizes heat transfer to heat sink fins.



**HiDANplus**—Integrating the modularity of IDAN with the ruggedization of HiDAN, HiDANplus enables connectors on all system frames, with signals running between frames through a dedicated stack-through raceway.

## IDAN Dimensions and Connectors

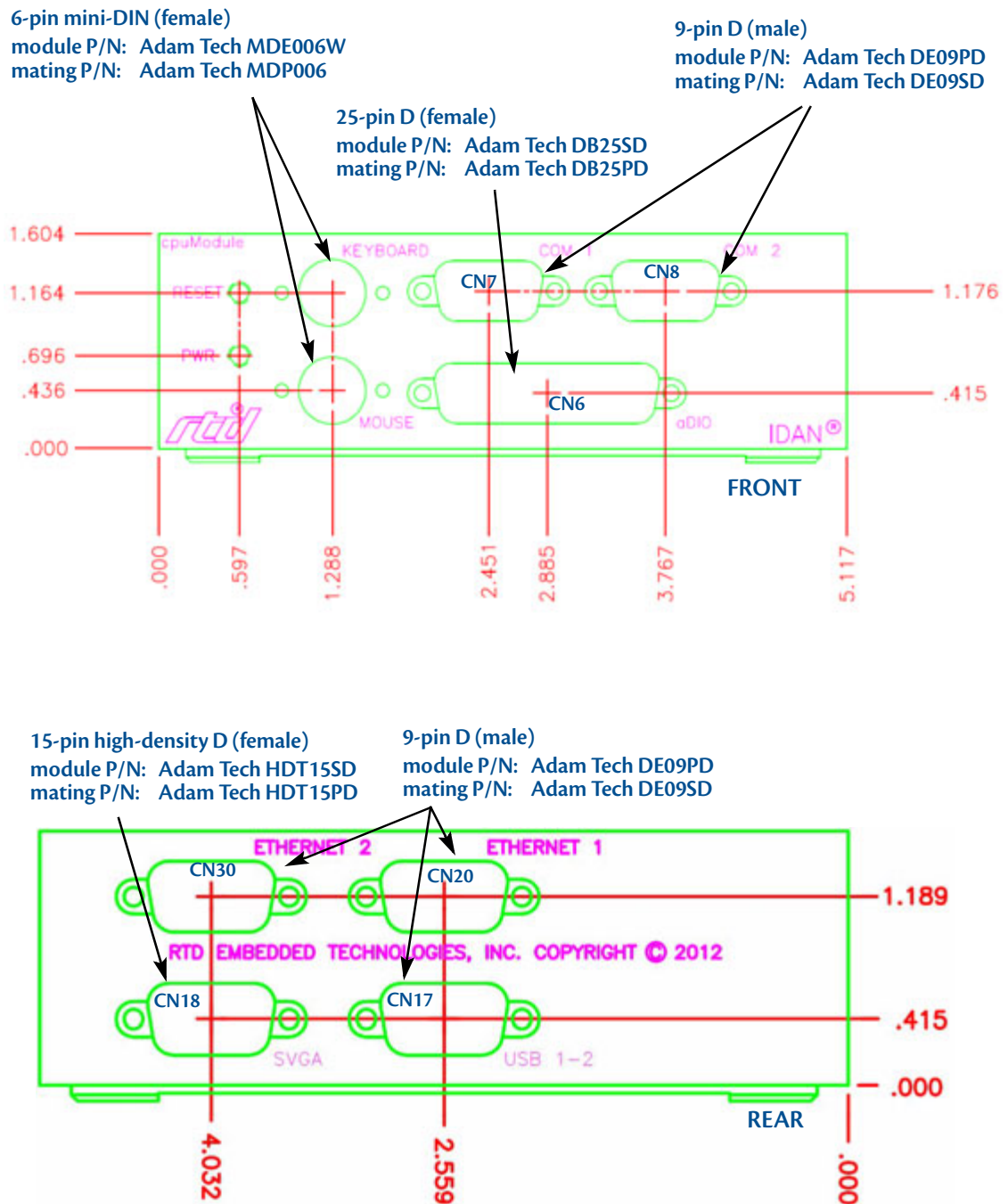


Figure 9 IDAN-CME34M Connectors<sup>1,2</sup>

1. Heatsink fins (not shown in Figure 9) extend 0.75 inches from the sides of the IDAN frame.
2. Use 40mm for this frame when calculating bolt lengths.

## External I/O Connections

**Table 58 PS/2 Mouse — 6-Pin mini-DIN Connector (female)**

IDAN Pin #	Signal	Function
1	MDAT	Mouse Data
2	Reserved	—
3	GND	Ground
4	+5 V	+5 Volts
5	MCLK	Mouse Clock
6	Reserved	—

**Table 59 Keyboard — 6-Pin mini-DIN Connector (female)**

IDAN Pin #	Signal	Function
1	KDAT	Keyboard Data
2	Reserved	—
3	GND	Ground
4	+5 V	+5 V
5	KCLK	Keyboard Clock
6	Reserved	—

**Table 60 COM1/COM2 (RS-232) — 9-Pin D Connector (male)**

IDAN Pin #	Signal	Function	Mode
1	DCD	Data Carrier Detect	Input
2	RXD	Receive Data	Input
3	TXD	Transmit Data	Output
4	DTR	Data Terminal Ready	Output
5	GND	Ground	—
6	DSR	Data Set Ready	Input
7	RTS	Request To Send	Output
8	CTS	Clear To Send	Input
9	RI	Ring Indicator	Input

**Table 61 COM1/COM2 (RS-422/485) — 9-Pin D Connector (male)**

IDAN Pin #	Signal	Function	Mode
1	Reserved	—	—
2	RXD–	Receive Data –	Input
3	TXD–	Transmit Data –	Output
4	Reserved	—	—
5	GND	Ground	—
6	Reserved	—	—
7	TXD+	Transmit Data +	Output
8	RXD+	Receive Data +	Input
9	Reserved	—	—

**Table 62 COM A (RS-232) and COM B(RS-232)**

IDAN Pin #	Signal	Function	Mode	CPU Pin #
1	DCD1	COM A- Data Carrier Detect	Input	1
6	RXD2	COM B- Receive Data	Input	2
2	RXD1	COM A - Receive Data	Input	3
7	RTS1	COM A - Request To Send	Output	4
3	TXD1	COM A - Transmit Data	Output	5
8	CTS1	COM A - Clear To Send	Input	6
4	TXD2	COM B - Transmit Data	Output	7
9	RI1	COM A - Ring Indicate	Input	8
5	GND	Signal Ground	—	9
—	GND	Signal Ground	—	10

**Table 63 COM A (RS-422/485) and COM B (RS-232)**

IDAN Pin #	Signal	Function	Mode	CPU Pin #
1	DCD1	COM A - Data Carrier Detect	Input	1
6	RXD2	COM B - Receive Data	Input	2
2	RXD1-	COM A - Receive Data (-)	Input	3
7	TXD1+	COM A - Transmit Data (+)	Output	4
3	TXD1-	COM A - Transmit Data (-)	Output	5
8	RXD1+	COM A - Receive Data (+)	Input	6
4	TXD2	COM B - Transmit Data	Output	7
9	RI1	COM A - Ring Indicate	Input	8
5	GND	Signal Ground	—	9
—	GND	Signal Ground	—	10

**Table 64 COM A (RS-422/485) and COM B (RS-422/485)**

IDAN Pin #	Signal	Function	Mode	CPU Pin #
1	RXD2+	COM B - Receive Data (+)	Input	1
6	RXD2-	COM B - Receive Data (-)	Input	2
2	RXD1-	COM A - Receive Data (-)	Input	3
7	TXD1+	COM A - Transmit Data (+)	Output	4
3	TXD1-	COM A - Transmit Data (-)	Output	5
8	RXD1+	COM A - Receive Data (+)	Input	6
4	TXD2-	COM B - Transmit Data (-)	Output	7
9	TXD2+	COM B - Transmit Data (+)	Output	8
5	GND	Signal Ground	—	9
—	GND	Signal Ground	—	10





**Table 65 SVGA — 15-Pin High Density D Connector (female)**

IDAN Pin #	Signal	Function	CPU Pin #
1	Red	Red Analog Output	4
2	Green	Green Analog Output	6
3	Blue	Blue Analog Output	8
4	Reserved	Reserved	—
5	GND	Ground	9
6	GND	Ground	9
7	GND	Ground	9
8	GND	Ground	10
9	+5 V	+ 5 Volts	7
10	GND	Ground	10
11	Reserved	Reserved	—
12	DDC Data	Monitor data	5
13	HSYNC	Horizontal Sync	2
14	VSYNC	Vertical Sync	1
15	DDC CLK	Monitor Clock	3

**Table 66 USB — 9-Pin D Connector (male)**

IDAN Pin #	Signal	Function	Mode
1	VCC1	+5 V to USB1	output
2	Data USB1–	USB1 Data–	input/output
3	Data USB1+	USB1 Data+	input/output
4	GND	Ground	—
5	GND	Ground	—
6	VCC2	+5 V to USB2	output
7	Data USB2–	USB2 Data–	input/output
8	Data USB2+	USB2 Data+	input/output
9	GND	Ground	—

**Table 67 Ethernet — 9-Pin D Connector (female)**

IDAN Pin #	RJ-45 Pin	Signal	CPU Pin #
1	3	B+(RX+)	1
2	4	C+	3
3	1	A+(TX+)	5
4	7	D+	7
5	-	Ground	9
6	6	B-(RX-)	2
7	5	C-	4
8	2	A-(TX-)	6
9	8	D-	8







## Appendix D Additional Information

### Application Notes

RTD offers many application notes that provide assistance with the unique feature set of the CME34M cpuModule. For the latest application notes, refer to the RTD website.

### Drivers and Example Programs

To obtain the latest versions of drivers and example programs for this cpuModule, refer to the RTD website.

### Interrupt Programming

For more information about interrupts and writing interrupt service routines, refer to the following book:

Interrupt-Driven PC System Design  
by Joseph McGivern  
ISBN: 0929392507

### Serial Port Programming

For more information about programming serial port UARTs, consult the following book:

Serial Communications Developer's Guide  
by Mark Nielson  
ISBN: 0764545701

### PC/104 Specifications

A copy of the latest PC/104 specifications can be found on the webpage for the PC/104 Embedded Consortium:

<http://www.pc104.org>





## Appendix E Limited Warranty

RTD Embedded Technologies, Inc. warrants the hardware and software products it manufactures and produces to be free from defects in materials and workmanship for one year following the date of shipment from RTD Embedded Technologies, Inc. This warranty is limited to the original purchaser of product and is not transferable.

During the one year warranty period, RTD Embedded Technologies will repair or replace, at its option, any defective products or parts at no additional charge, provided that the product is returned, shipping prepaid, to RTD Embedded Technologies. All replaced parts and products become the property of RTD Embedded Technologies. Before returning any product for repair, customers are required to contact the factory for a Return Material Authorization number.

This limited warranty does not extend to any products which have been damaged as a result of accident, misuse, abuse (such as: use of incorrect input voltages, improper or insufficient ventilation, failure to follow the operating instructions that are provided by RTD Embedded Technologies, “acts of god” or other contingencies beyond the control of RTD Embedded Technologies), or as a result of service or modification by anyone other than RTD Embedded Technologies. Except as expressly set forth above, no other warranties are expressed or implied, including, but not limited to, any implied warranties of merchantability and fitness for a particular purpose, and RTD Embedded Technologies expressly disclaims all warranties not stated herein. All implied warranties, including implied warranties for merchantability and fitness for a particular purpose, are limited to the duration of this warranty. In the event the product is not free from defects as warranted above, the purchaser's sole remedy shall be repair or replacement as provided above. Under no circumstances will RTD Embedded Technologies be liable to the purchaser or any user for any damages, including any incidental or consequential damages, expenses, lost profits, lost savings, or other damages arising out of the use or inability to use the product.

Some states do not allow the exclusion or limitation of incidental or consequential damages for consumer products, and some states do not allow limitations on how long an implied warranty lasts, so the above limitations or exclusions may not apply to you.

This warranty gives you specific legal rights, and you may also have other rights which vary from state to state.

RTD Embedded Technologies, Inc.  
103 Innovation Blvd.  
State College PA 16803-0906  
USA  
Website: [www.rtd.com](http://www.rtd.com)

